



Looking for a tenant who will treat your home like their own?
We will help you find them

Monthly Property Management Statistics

*Statistics supported by inspectrealestate.com.au

6 Days 0.07% \$500M+ 100%

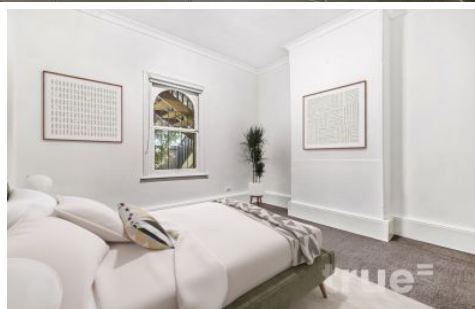
average time to secure tenancy

current vacancy rate

worth of property under management

focused on securing a quality tenancy & maximise profit on investment

CALL 02 8507 2444
info@trueproperty.com.au



1/415 Balmain Road Lilyfield NSW



Available 14th November 2024 = Unparalleled in size and position this wonderful apartment offers a fantastic and practical layout for all those who view. Located on one of Lilyfield's most sought after locations this apartment offers a peaceful and relaxed setting.

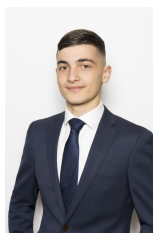
Type : Unit
Price : DEPOSIT RECEIVED =
View : <https://www.trueproperty.com.au/lease/nsw/inner-west/lilyfield/residential/unit/8174398>

THE PROPERTY

- = One double sized bedroom
- = One well maintained bathroom

THE FEATURES

- = Light filled living space
- = Well appointed eat-in kitchen
- = Shared laundry facilities with your own space to fit your own machine



Daniel Daher
8507 2444

[For full version visit the website](https://www.trueproperty.com.au)