

Looking for a tenant who will treat your home like their own?
We will help you find them

Monthly Property Management Statistics

*Statistics supported by inspectrealestate.com.au

6 Days 0.07% \$500M+ 100%

average time
to secure tenancy

current
vacancy rate

worth of property
under management

focused on
securing a quality
tenancy & maximise
profit on investment

CALL 02 8507 2444
info@trueproperty.com.au

true[®]



4405/6 Alexandra Drive Camperdown NSW

1 1 1

Available 20th November 2024 = Prestigiously positioned in one of Sydney's most sought-after executive developments - City Quarter. This modern one-bedroom apartment boasts an oversized balcony perfect for the upcoming summer.

Type : Apartment
Price : DEPOSIT RECEIVED =
View : <https://www.trueproperty.com.au/lease/nsw/inner-west/camperdown/residential/apartment/8174366>

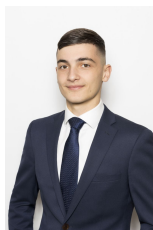
THE PROPERTY

- = One generous bedroom with built-in wardrobes
- = One immaculate bathroom with a separate bath and shower
- = One undercover secure car space

THE FEATURES

- = Huge sun-drenched open plan combined living and dining area

[For full version visit the website](https://www.trueproperty.com.au)



Daniel Daher
8507 2444