



12/3a Bortfield Drive Drive Chiswick NSW

2 1 1

Available 25th November 2024 = Capturing intimate breathtaking Sydney CBD and water views, this beautifully renovated apartment not only delivers an idyllic sanctuary of style, space and comfort but also promises world class lifestyle excellence and convenience. Destined to impress, this enviable executive residence is ideal for anyone looking for that new special place to call home.

Type : Apartment

Price : \$900 pw

View : <https://www.trueproperty.com.au/lease/nsw/inner-west/chiswick/residential/apartment/8163657>

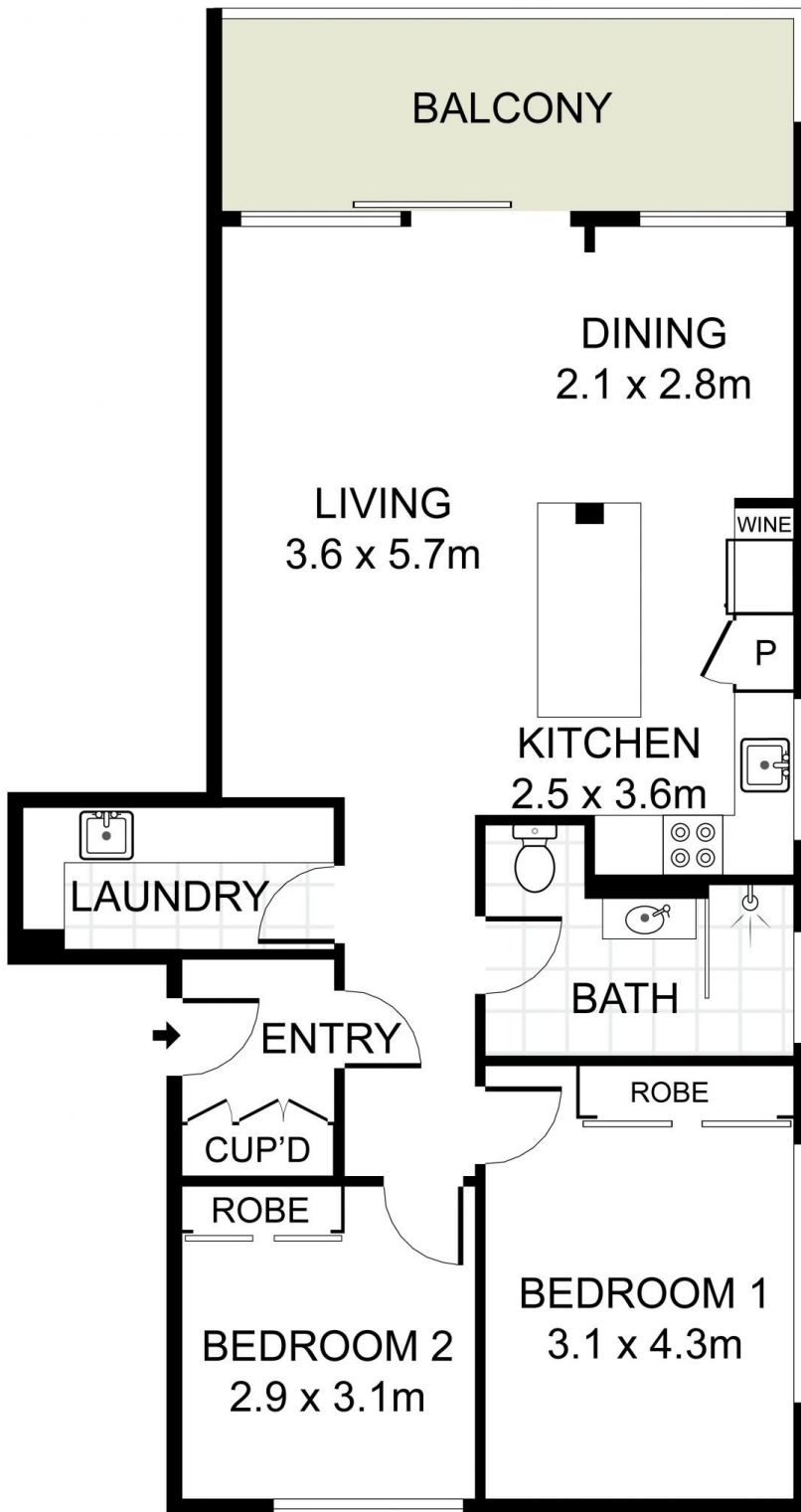
THE PROPERTY

- = Two king sized spacious bedrooms, both with built in robes
- = Stylishly renovated designer bathroom
- = Secure lock up garage with private access into the apartment complex



Daniel Daher
8507 2444

[For full version visit the website](#)



**DIRECT
INTERNAL
ACCESS**



DISCLAIMER: PLANS SHOWN ARE FOR PRESENTATION PURPOSES AND ARE NOT PART OF ANY LEGAL DOCUMENT. ALL MEASUREMENTS AND FIGURES ARE APPROXIMATE.