



25 Pine Avenue Five Dock NSW

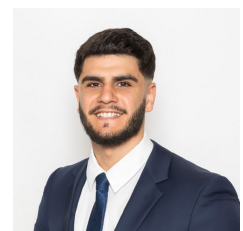
5 2 3

For the first time offered in over 62 years and positioned in one of Five Dock's most respected and highly sought after locations on a picturesque tree-lined street, stands this solid freestanding home located on a huge corner block of approx. 694sqm where the opportunities are endless. Five Dock boasts one of the most outstanding lifestyle opportunities in the inner west with an abundance of family friendly activities, awe inspiring waterfront parks, award winning dining and diverse infusion of European and Australian influenced culture. Located within 10km to Sydney CBD, moments to Five Dock town centre including the newly developed Five Dock Metro (coming soon) and within minutes to Parramatta Road, M4 motorway and Westconnex

Type : House
Price : Auction
Land Size : 694 sqm
View : <https://www.trueproperty.com.au/sale/nsw/inner-west/five-dock/residential/house/8148434>

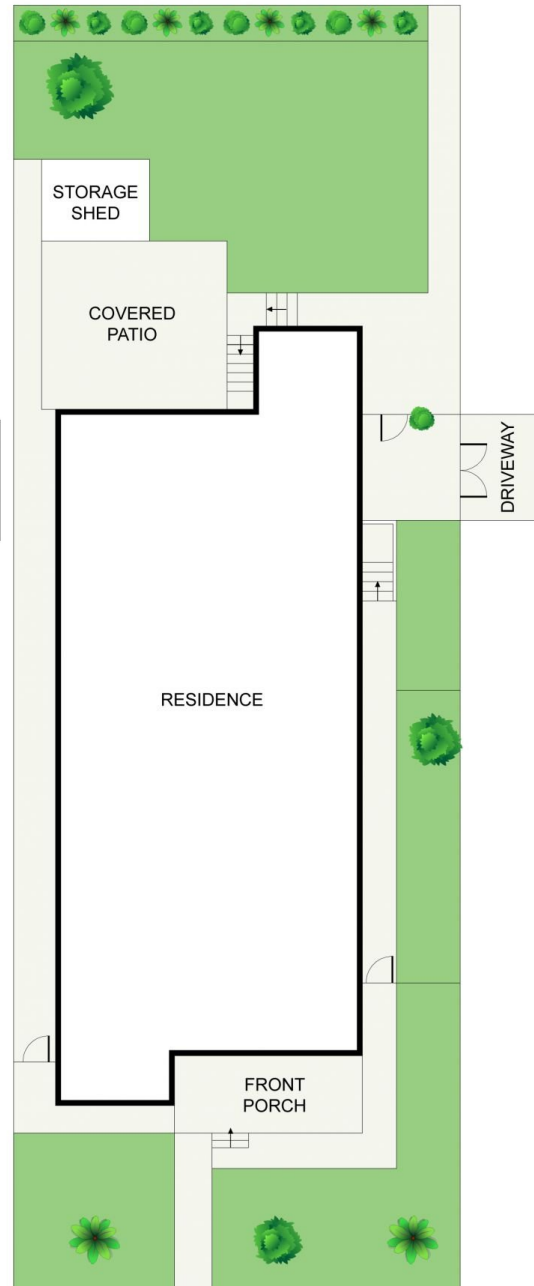
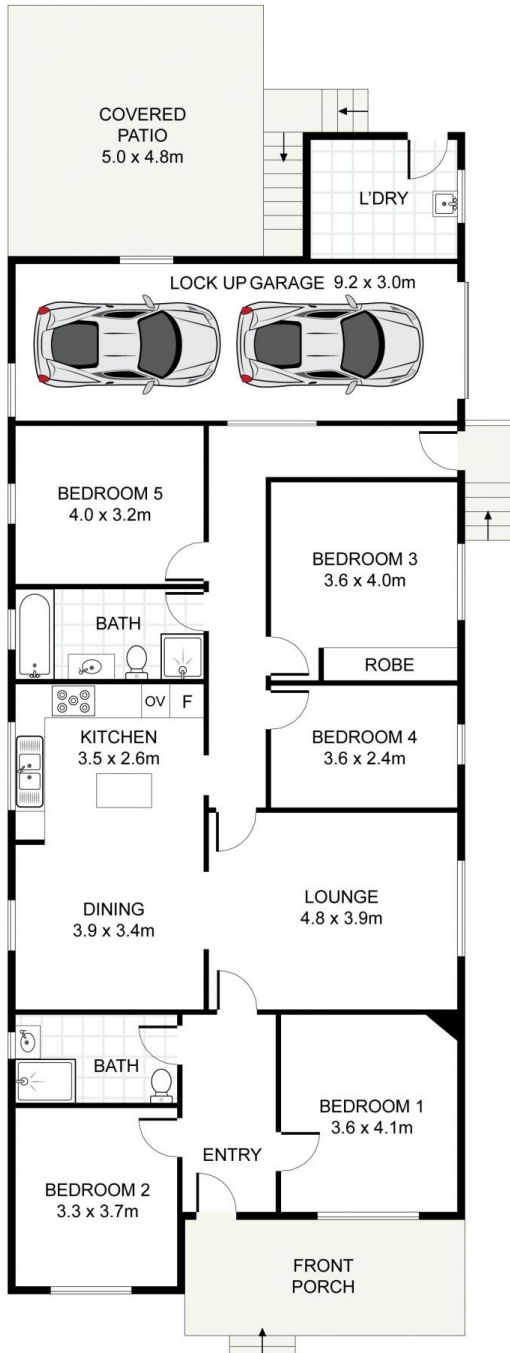
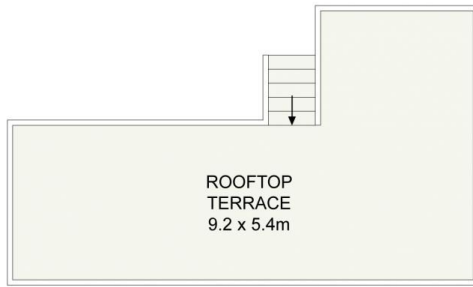


Michael Catalano
02 8507 2444



Nicholas Ellias
02 8507 2444

[For full version visit the website](https://www.trueproperty.com.au)



25 Pine Avenue, Five Dock

true[®]

DISCLAIMER: PLANS SHOWN ARE FOR PRESENTATION PURPOSES AND ARE NOT PART OF ANY LEGAL DOCUMENT. ALL MEASUREMENTS AND FIGURES ARE APPROXIMATE.