

Looking for a tenant who will treat your home like their own?  
We will help you find them

Monthly Property Management Statistics

\*Statistics supported by inspectrealestate.com.au

6 Days 0.07% \$500M+ 100%

average time  
to secure tenancy

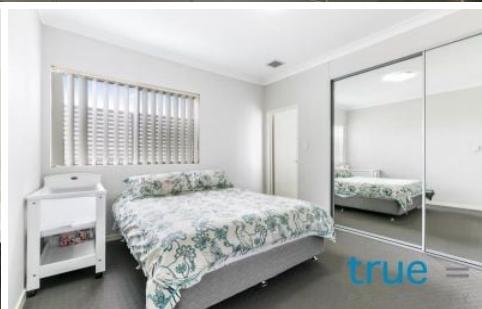
current  
vacancy rate

worth of property  
under management

focused on  
securing a quality  
tenancy & maximise  
profit on investment

CALL 02 8507 2444  
info@trueproperty.com.au

true<sup>®</sup>



14/18-20 Terrace Road Dulwich Hill NSW

2 🛏 2 🚿 1 🚗

Available 4th October 2024 = This wonderful apartment in "Terrace Grove" consist of an open plan design which stretches out onto a generous sized balcony perfect for entertaining. The property is perfectly positioned for convenience and is just moments from the light rail, train station, buses and a great selection of local shops, restaurants and cafes.

**Type** : Unit  
**Price** : DEPOSIT RECEIVED =  
**View** : <https://www.trueproperty.com.au/lease/nsw/inner-west/dulwich-hill/residential/unit/8137885>

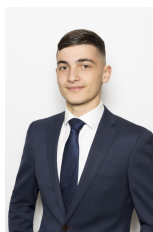
#### THE PROPERTY

- = Two spacious bedrooms, both with built-in wardrobes
- = Two modern bathrooms
- = Secure car space and storage cage

#### THE FEATURES

- = Open plan lounge and dining with air conditioning

[For full version visit the website](#)



**Daniel Daher**  
8507 2444