



16a Curtin Avenue Abbotsford NSW

4 3 3

Available now = Experience luxury living at its finest with this meticulously designed home, when combining a perfect blend of space, flexibility and high-end finishes. Offering expansive interiors that boast natural light and low-maintenance outdoor areas, this home is sure to meet all your needs. Where high end meets high tech, this truly stunning property is bound to impress, possessing a spacious and easy to follow floorplan with polished concrete floors, eco-friendly timber, and all just moments from the water's edge.

THE PROPERTY

- = Four bedrooms with copious amounts of space and built-in wardrobes.
- = Two luxurious full bathrooms with an internal laundry.

[For full version visit the website](https://www.trueproperty.com.au/lease/nsw/inner-west/abbotsford/residential/semi-detached/8120154)

Type : Semi Detached

Price : \$1,800 pw

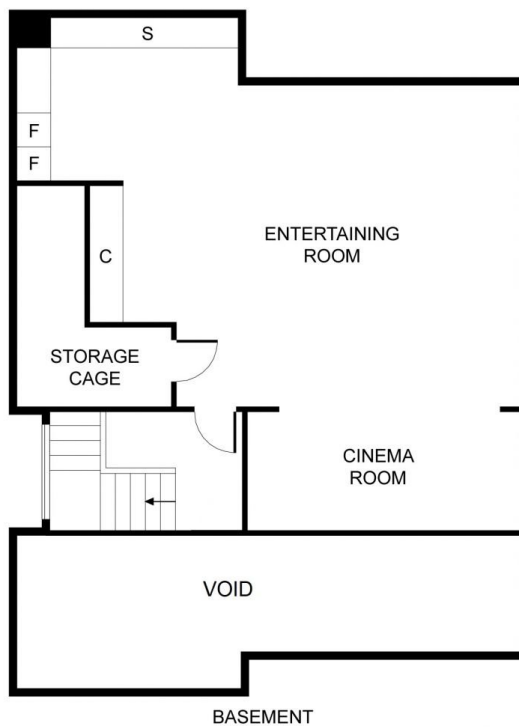
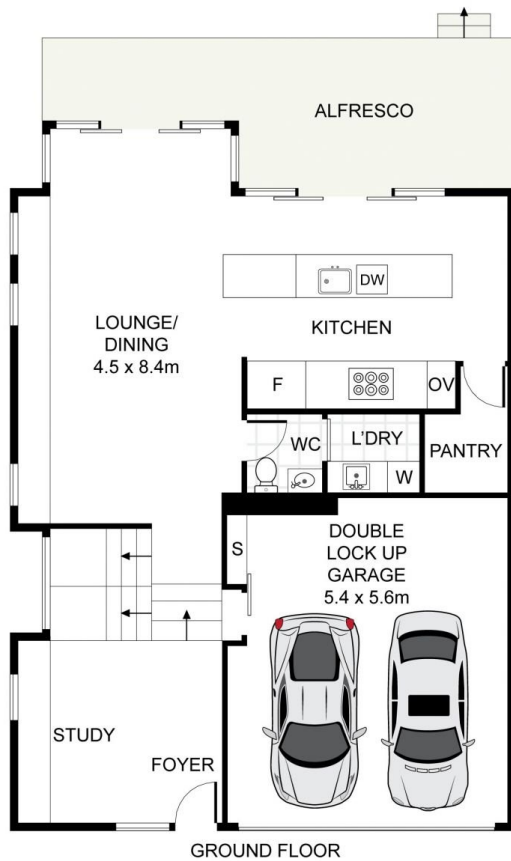
View : <https://www.trueproperty.com.au/lease/nsw/inner-west/abbotsford/residential/semi-detached/8120154>



Nicholas Ellias
02 8507 2444



Michael Catalano
02 8507 2444



16a Curtin Avenue, Abbotsford

true[®]

DISCLAIMER: PLANS SHOWN ARE FOR PRESENTATION PURPOSES AND ARE NOT PART OF ANY LEGAL DOCUMENT. ALL MEASUREMENTS AND FIGURES ARE APPROXIMATE.