



506/24b George Street Leichhardt NSW

2 2 1

Situated in the 'Leichhardt Green' and designed by award winning architects, be amazed by the immaculate finishes on offer by this truly stunning two bedroom apartment. Step into the perfect blend of comfort, style, and convenience and discover the epitome of urban living. Perfectly set just a short walk to well-known and award winning restaurants, boasting a vast range of trendy cafes, bakeries and wine bars. Only just moments away from Taverners Hill Light Rail, Lewisham Train Station and express Sydney CBD Bus Services.

Price : \$ 980,000
Land Size : 96 sqm
View : <https://www.trueproperty.com.au/sale/nsw/inner-west/leichhardt/residential/unit/8068263>

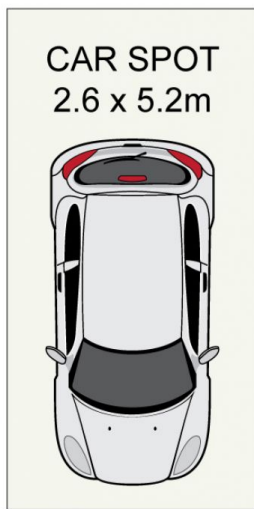
- = Two large bedrooms, both with built-in wardrobes
- = Two spacious tiled bathrooms
- = One security car space
- = Gourmet contemporary gas kitchen fitted with European appliances including a dishwasher
- = Large open plan living leading to an entertainers balcony



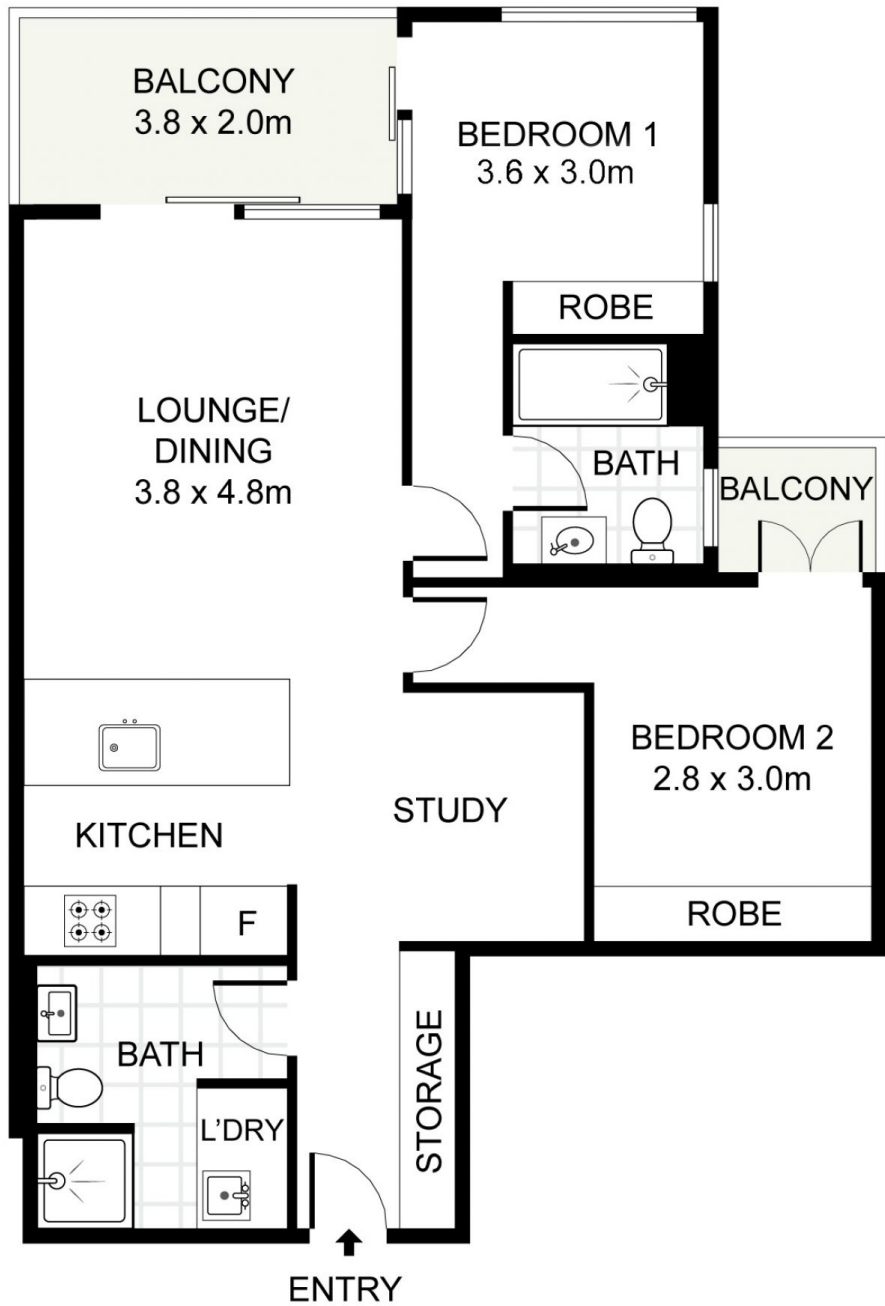
Michael Catalano
02 8507 2444



Nicholas Ellias
02 8507 2444



(NOT IN POSITION)



506/24b George Street, Leichhardt

true⁺

DISCLAIMER: PLANS SHOWN ARE FOR PRESENTATION PURPOSES AND ARE NOT PART OF ANY LEGAL DOCUMENT. ALL MEASUREMENTS AND FIGURES ARE APPROXIMATE.