



2 Wade Street MAROUBRA NSW

3  2 

= HOLDING DEPOSIT RECEIVED = Nestled high on a hill overlooking gorgeous Heffron Park and surrounded by local parklands, shopping centres and schools lies this stunning and newly renovated home.

Type : House
Land Size : 337 sqm
View : <https://www.trueproperty.com.au/lease/nsw/eastern-suburbs/maroubra/residential/house/7684593>

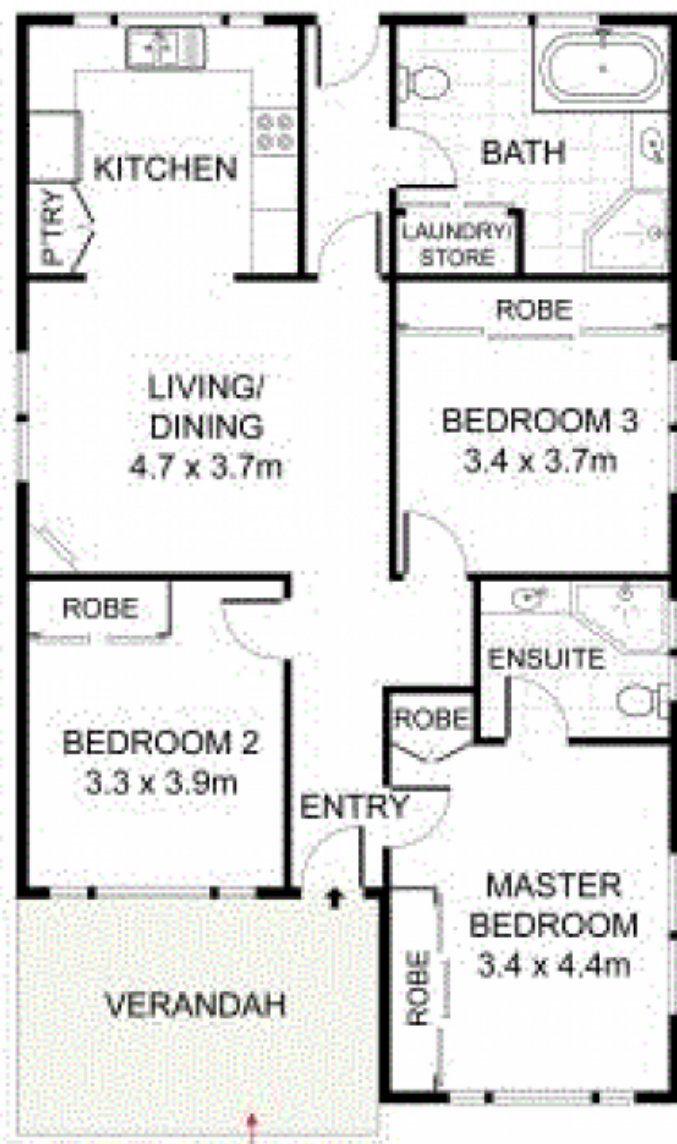
THE PROPERTY

- = Three huge king sized bedrooms, all with built in wardrobes
- = Two ultra-modern bathrooms (main with separate bath)
- = On street parking

THE FEATURES

- = Large modern granite kitchen with plenty of storage space
- = Generous sized open plan combined living and dining

[For full version visit the website](#)



GROUND FLOOR



SITE PLAN (NOT TO SCALE)