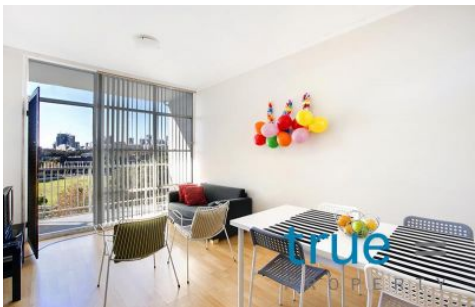


Actual View



## 703/34 Wentworth Street GLEBE NSW

2 1

= HOLDING DEPOSIT RECEIVED = Perfectly positioned in an iconic and ideal location with breathtaking city views over gorgeous Wentworth Park and surrounded by some of the best lifestyle facilities Sydney has to offer such as waterfront parks, Sydney Fish Markets, Broadway Shopping Centre or Glebe's award winning eateries all just a short stroll away.

### THE PROPERTY

- = Located high in the sky on level seven with lift access
- = Two comfortable bedrooms with city views
- = One neat bathroom with internal laundry space

### THE FEATURES

- = Sundrenched open plan combined living and dining area

[For full version visit the website](https://www.trueproperty.com.au/lease/nsw/inner-west/glebe/residential/apartment/7683617)

**Type** : Apartment

**View** : <https://www.trueproperty.com.au/lease/nsw/inner-west/glebe/residential/apartment/7683617>



**Eden Farlow**  
8507 2444