



## 213/1-3 Larkin Street CAMPERDOWN NSW

2 2 1

Positioned in one of Sydney's most practical locations comes this beautiful property located in an immaculately kept building situated on a quiet cul de sac. With a unique design and sun-drenched interiors this property is undoubtedly one of the largest two bedroom properties on the market and an absolute must to inspect. Located just moments from transport with easy access to the Sydney CBD and RPA Hospital.

- = Two double bedrooms with built-in wardrobes
- = Two ultra-modern bathrooms with combined bath and shower
- = One secure car space
- = Substantial combined living and dining areas flowing out to a north east facing entertainers balcony

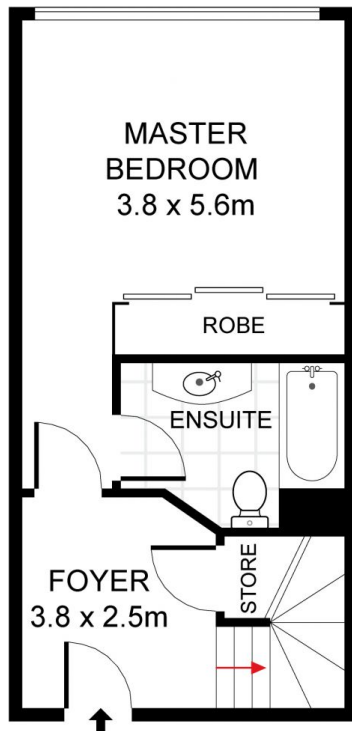
**Type** : Apartment

**View** : <https://www.trueproperty.com.au/sale/nsw/inner-west/camperdown/residential/apartment/7682464>

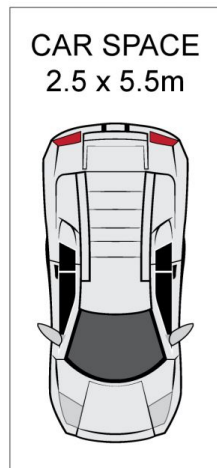


**Michael Catalano**  
02 8507 2444

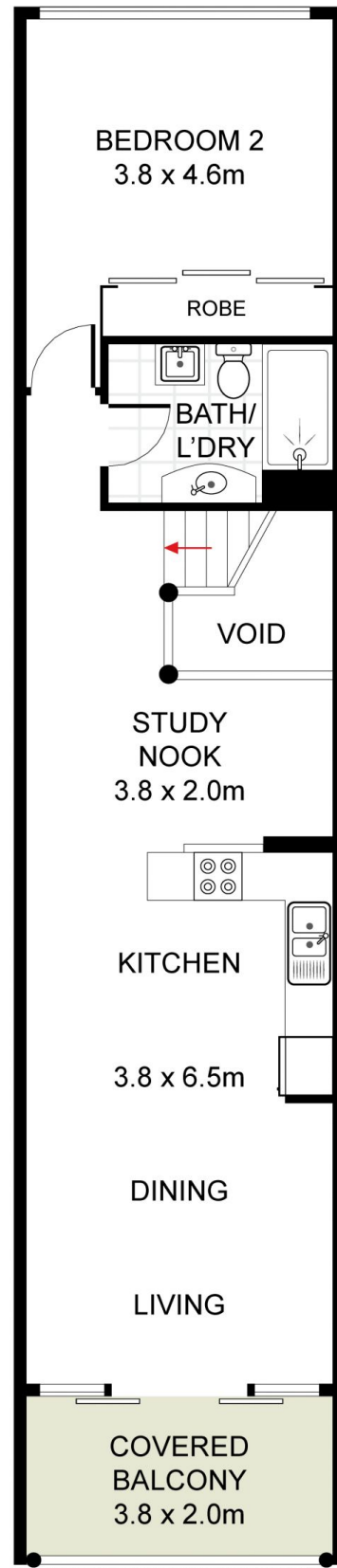
[For full version visit the website](https://www.trueproperty.com.au)



GROUND FLOOR



**true** =  
P R O P E R T Y



FIRST FLOOR

213/1 Larkin Street, Camperdown

DISCLAIMER: PLANS SHOWN ARE FOR PRESENTATION PURPOSES AND ARE NOT PART OF ANY LEGAL DOCUMENT. ALL MEASUREMENTS AND FIGURES ARE APPROXIMATE.