



**7/153 Salisbury Road CAMPERDOWN NSW**

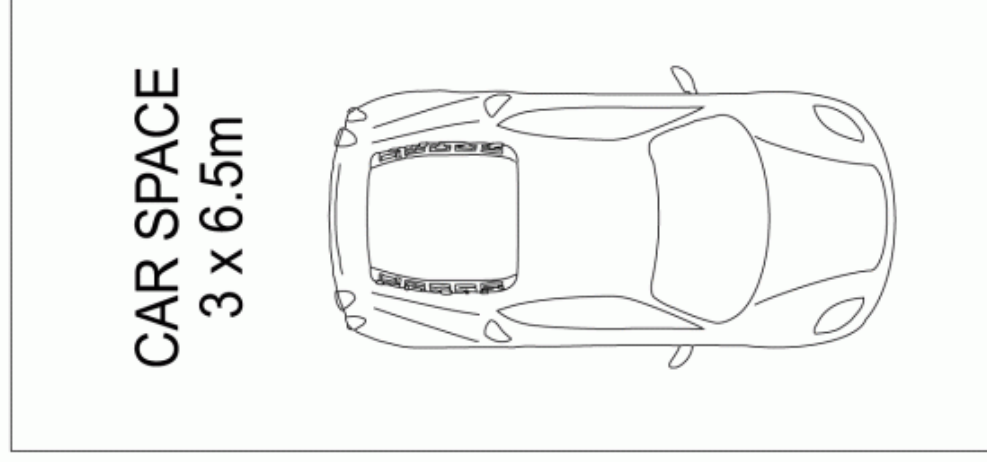
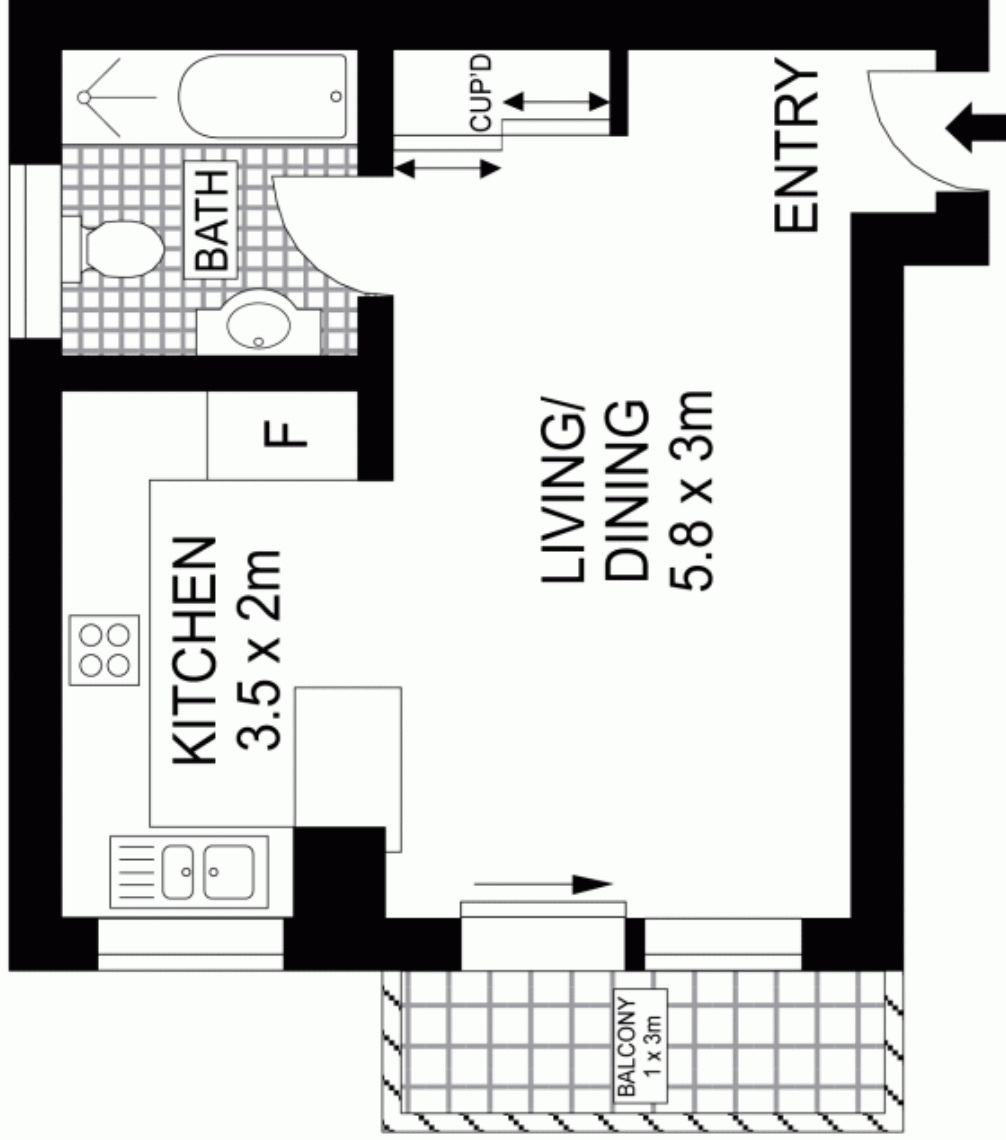
1 1 1

An outstanding home or investment opportunity moments from both RPA Hospital and Sydney University. Located at the quiet rear of the block enjoy the leafy outlook from the covered balcony and the spacious kitchen and bathroom.

**Type** : Apartment

**View** : <https://www.trueproperty.com.au/sale/nsw/inner-west/camperdown/residential/apartment/7682451>

A generous studio with 45 sqm on title.  
Beautiful parquetry timber floors  
Large kitchen with plenty of storage  
Generous bathroom with bath  
Covered balcony with leafy outlook  
Security intercom access  
Parking space on title  
Currently rented for \$620 per fortnight  
[For full version visit the website](#)



Scale in metres. Indicative only. Dimensions are approximate. All information contained herein is gathered from sources we believe to be reliable. However, we cannot guarantee its accuracy and interested persons should rely on their own enquiries.



**true** =  
PROPERTY

7/153 Salisbury Road, Camperdown