

## 290 Glenmore Road PADDINGTON NSW

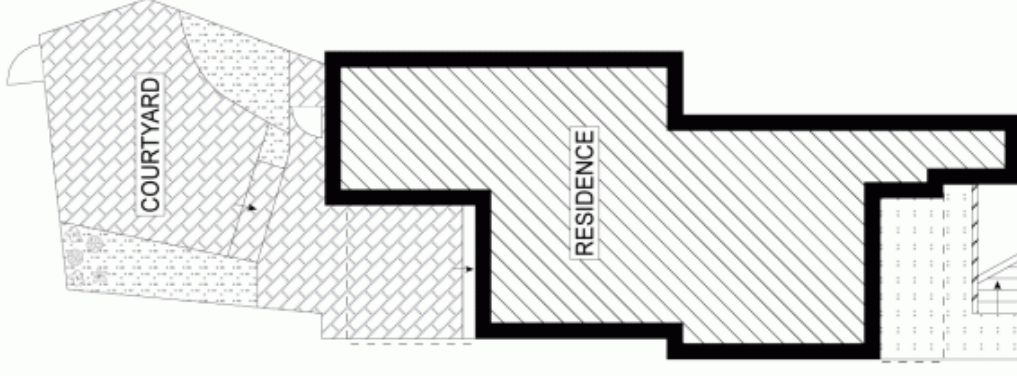
4 2

Full of style and charm, this wide-fronted terrace represents an excellent buying opportunity for those seeking a generously proportioned and freshly renovated home in a premier lifestyle location. Presented in the classic tradition yet stylishly enhanced for modern living, it features many designer finishes, retained period details and a versatile floorplan with many layout options.

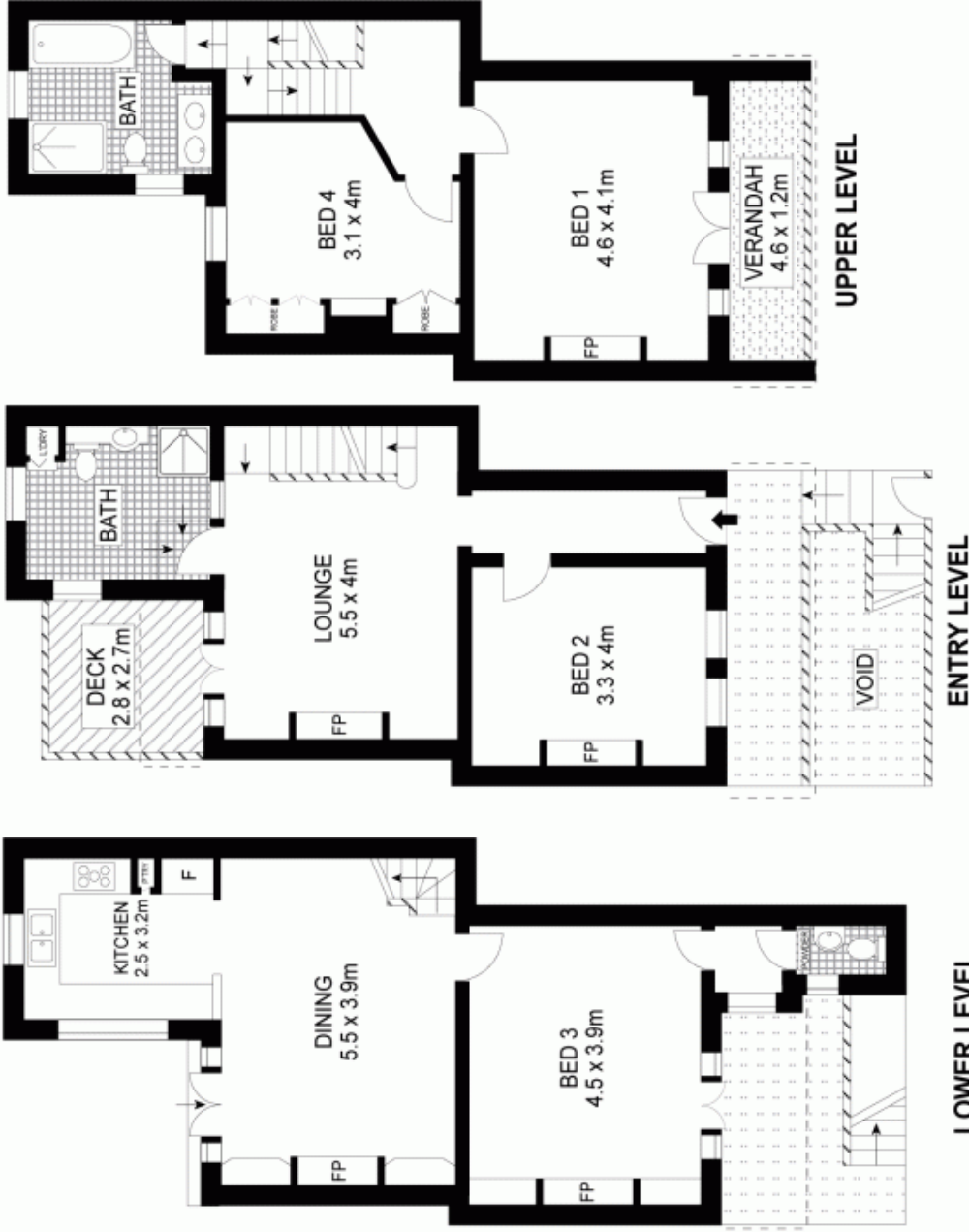
**Type** : House  
**Land Size** : 112 sqm  
**View** : <https://www.trueproperty.com.au/sale/nsw/eastern-suburbs/paddington/residential/house/7682445>

Immaculate and flexible three level floorplan  
Separate upper and lower level living areas  
Wide alfresco deck with elevated rooftop views  
Contemporary kitchen and sleek Miele appliances  
Sunny rear courtyard with back lane access  
High ceilings, original fireplaces & polished floors  
Two renovated bathrooms with designer fittings

[For full version visit the website](#)



SITE PLAN (NOT TO SCALE)



Scale in metres. Indicative only. Dimensions are approximate. All information contained herein is gathered from sources we believe to be reliable. However, we cannot guarantee its accuracy and interested persons should rely on their own enquiries.