

230 Wilson Street NEWTOWN NSW

2 1

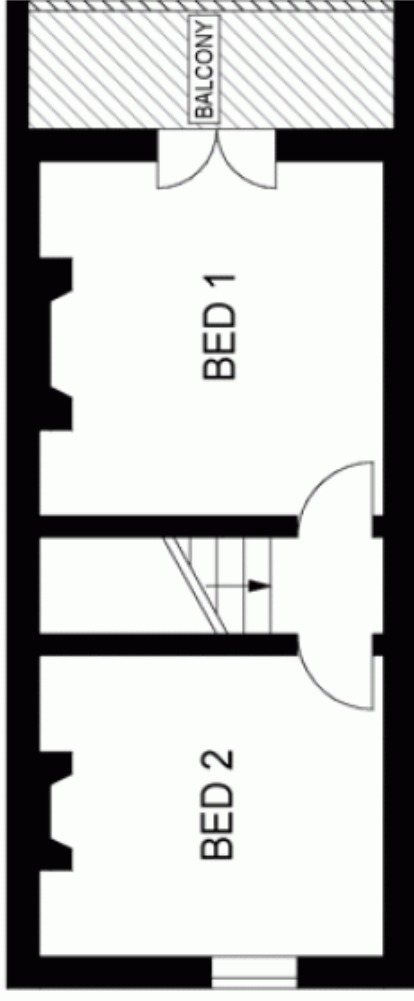
This dual level two bedroom terrace is positioned on the doorstep of everything Newtown and Erskineville have to offer. A fabulous home or investment opportunity in an every popular suburb.

Type : House

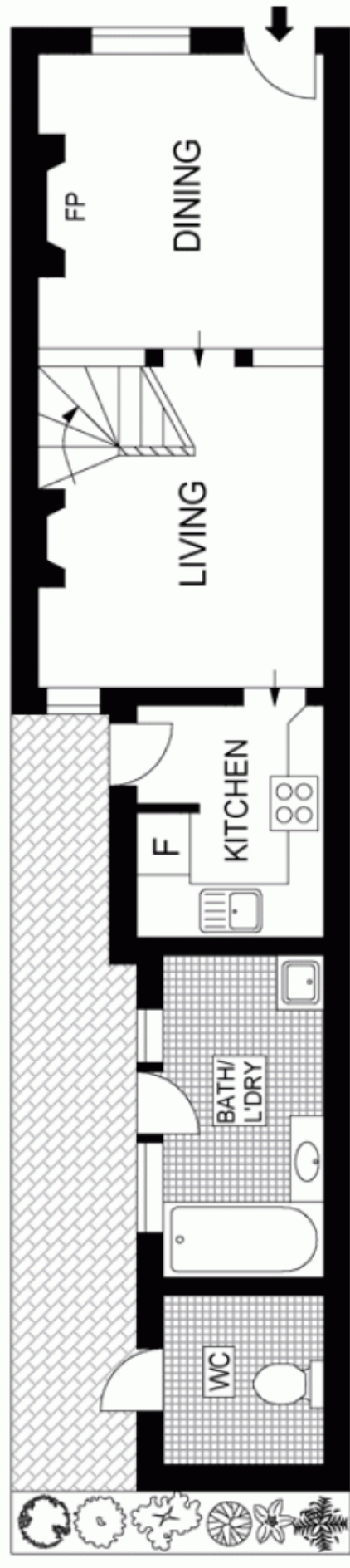
View : <https://www.trueproperty.com.au/sale/nsw/inner-west/newtown/residential/house/7682430>

- Open plan living and dining, perfect for entertaining
- Beautiful polished timber floors and ornate fireplace
- First floor balcony off master bedroom
- Sunny paved North facing rear courtyard
- Solar panel providing electricity for the household
- Live now with future value add potential
- Walk Macdonaldtown and Erskineville train stations
- Popular CarriageWorks markets just footsteps away
- Moments to Newtowns famous King Street & Erskineville Village

[For full version visit the website](#)



FIRST FLOOR



GROUND FLOOR



230 Wilson Street, Newtown