



614/221 Sydney Park Road ERSKINEVILLE NSW

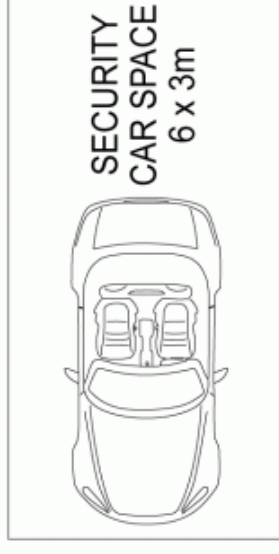
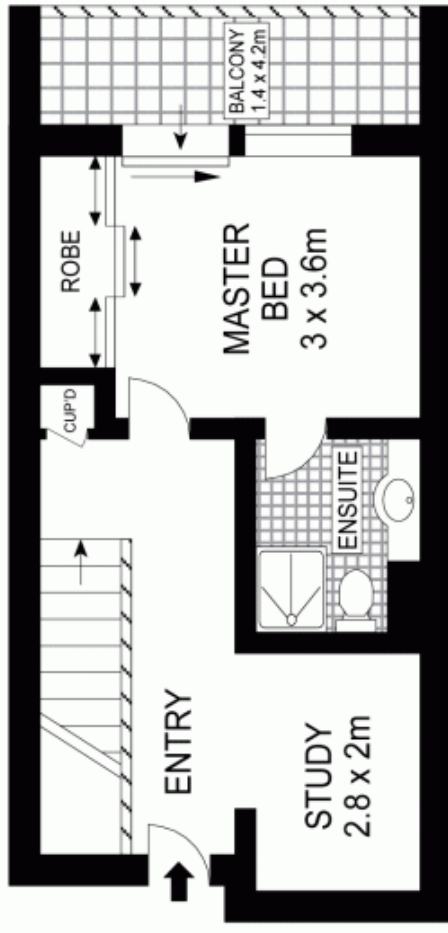
2 2 1

This spacious 138sqm dual level apartment is located in the beautifully maintained, sought after Zenix complex, just moments to transport and lifestyle amenities. Owner occupied and beautifully maintained there's nothing to do but move in and enjoy. Architectural design and modern amenities make this apartment a stand out opportunity for home owners and investors alike.

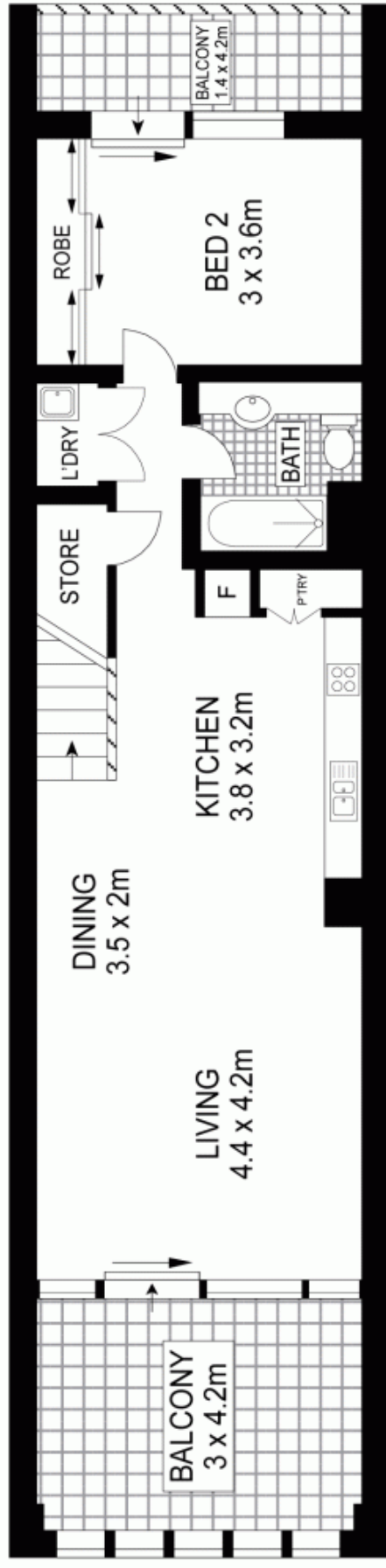
Type : Apartment
Land Size : 132 sqm
View : <https://www.trueproperty.com.au/sale/nsw/inner-west/erskineville/residential/apartment/7682423>

Open plan living and dining flows to the east facing balcony
Modern entertainers gas kitchen with stone bench tops
Views over the lush gardens and swimming pool
Spacious master bedroom with robes, en-suite and balcony
Second bedroom downstairs with robes and balcony
Main bathroom with bath, separate internal laundry
Dedicated study space, lift access, secure parking

[For full version visit the website](#)



GROUND FLOOR



Scale in metres. Indicative only. Dimensions are approximate. All information contained herein is gathered from sources we believe to be reliable. However, we cannot guarantee its accuracy and interested persons should rely on their own enquiries.



true
PROPERTY

614/221 Sydney Park Road, Erskineville