



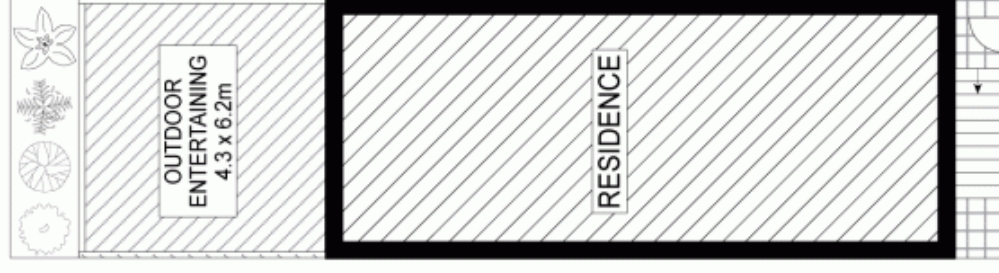
18 Nassau Lane ERSKINEVILLE NSW

3 2 1

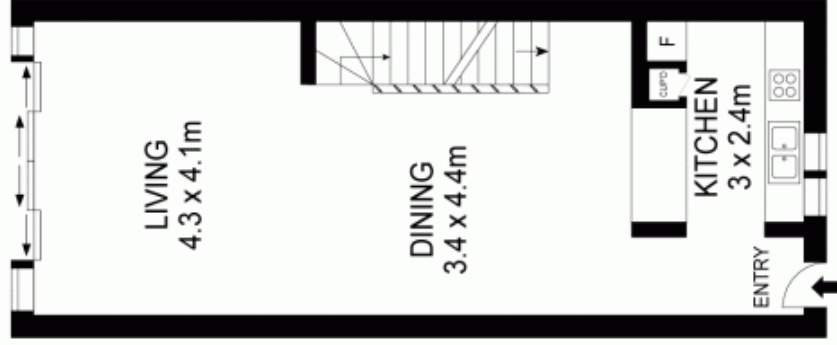
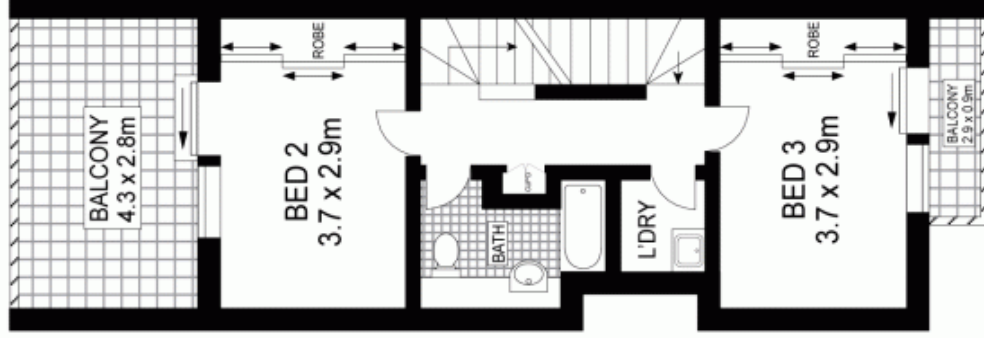
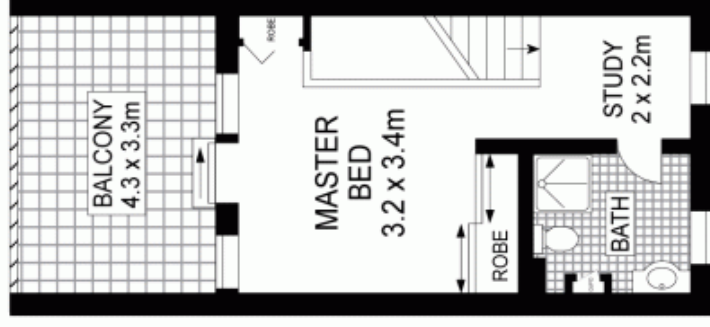
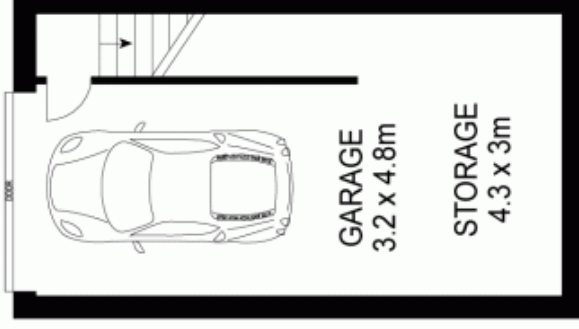
This 213sqm tri level terrace has generous living spaces perfect for families or entertainers just moments to Erskineville Village. With nothing to do move straight into this modern townhome in a sought after lifestyle location.

Open plan living and dining flows to north facing terrace
Gas kitchen with stone bench tops and Omega appliances
Three double bedrooms all with robes and balconies
Top floor master suite with en-suite and city views
Internal access to lock up garage with space for storage
Private street frontage with security intercom access
Common swimming pool facility, quiet cul-de-sac location
Moments to Erskineville and St Peters train transport
Current rented for \$900 per week

Type : House
Land Size : 213 sqm
View : <https://www.trueproperty.com.au/sale/nsw/inner-west/erskineville/residential/house/7682418>



Internal area 120 sqm
External area 59 sqm
Garage & storage 34sqm
Total area 213 sqm



GROUND LEVEL

LEVEL ONE

LEVEL TWO

BASEMENT

SITE PLAN (NOT TO SCALE)



Scale in metres. Indicative only. Dimensions are approximate. All information contained herein is gathered from sources we believe to be reliable. However, we cannot guarantee its accuracy and interested persons should rely on their own enquiries.