

## 65 Gowrie Street NEWTOWN NSW

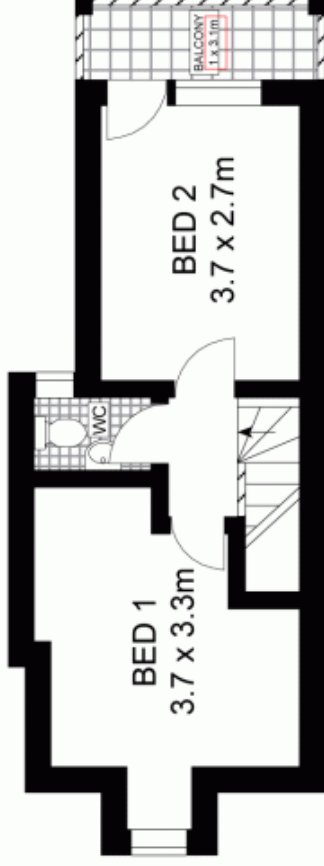
2  2 

In one of Newtown's most sought after addresses this stylishly presented home offers a convenient lifestyle, just moments from cafe's, village shops and transport options. The property has been beautifully updated to include modern conveniences whilst retaining its period charm.

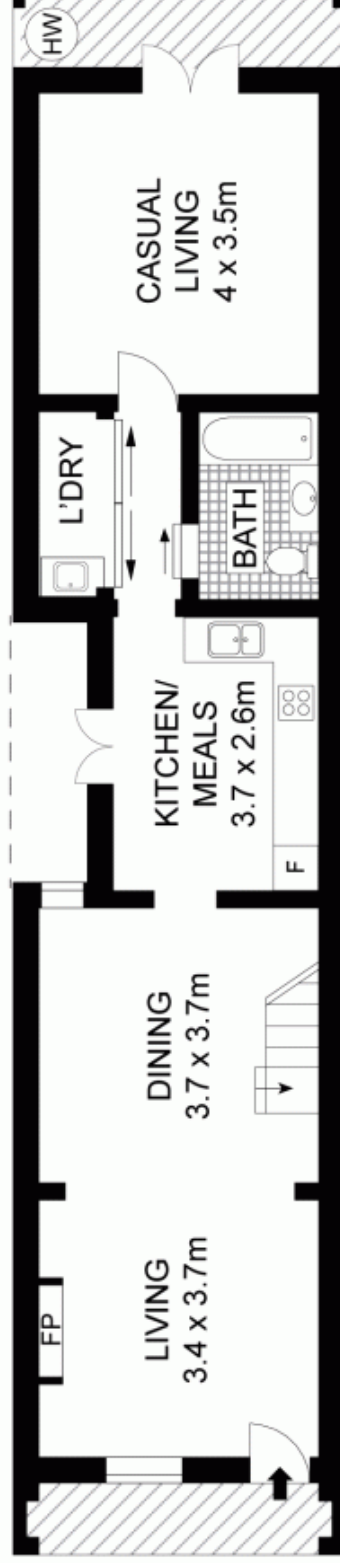
**Type** : House  
**Land Size** : 124 sqm  
**View** : <https://www.trueproperty.com.au/sale/nsw/inner-west/newtown/residential/house/7682408>

Superior open plan layout that optimises available space  
Formal living and dining with polished timber floors and gas fireplace  
Additional living room flows to the rear courtyard, potential additional guest bed  
Spacious modern kitchen with plenty of storage, dishwasher, stone bench tops and timber floors  
Main bathroom with bath, additional WC upstairs, separate laundry

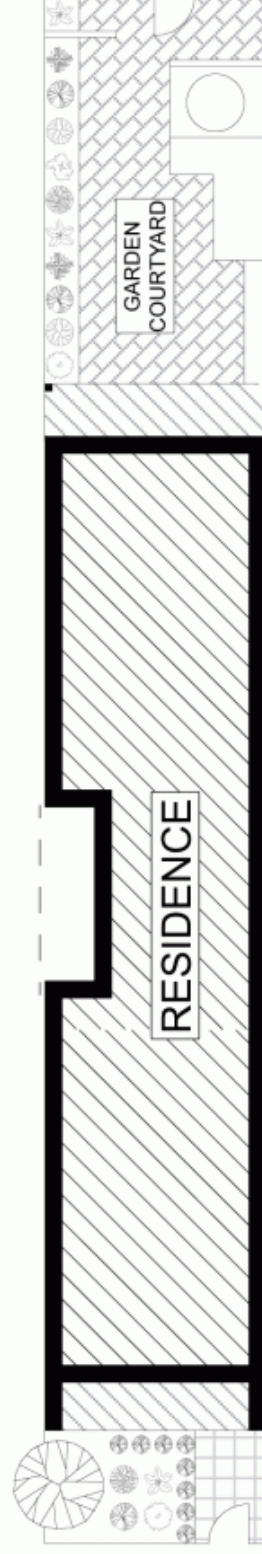
[For full version visit the website](#)



**LEVEL TWO**



**LEVEL ONE**



**SITE PLAN (NOT TO SCALE)**

Scale in metres. Indicative only. Dimensions are approximate. All information contained herein is gathered from sources we believe to be reliable. However, we cannot guarantee its accuracy and interested persons should rely on their own enquiries.