



## 91 Gowrie Street NEWTOWN NSW

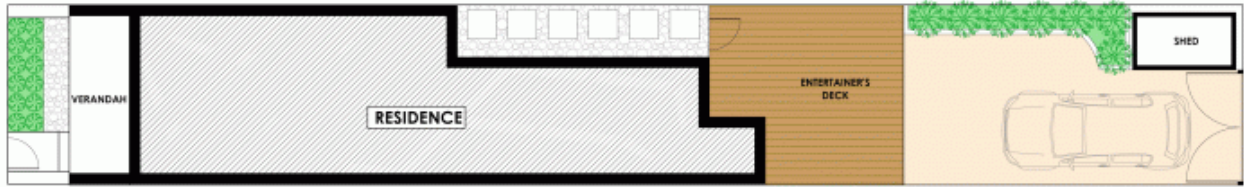
2 2 1

Just moments from Erskineville Village and Newtowns famous shopping, cafe and dining precinct this charming Victorian terrace offers lifestyle living over two spacious levels in one of Newtowns most sought after addresses. The property has been sympathetically updated maintaining many of the homes period features. The rear yard completes the offering, a tranquil entertainers oasis with rear lane access for parking.

**Type** : House  
**Land Size** : 130 sqm  
**View** : <https://www.trueproperty.com.au/sale/nsw/inner-west/newtown/residential/house/7682403>

Open plan living and dining rooms with fire places and period details  
Spacious light-filled rear yard with rear shed and plenty of entertaining space  
Calm & tranquil position on a tree lined street just footsteps from local parks

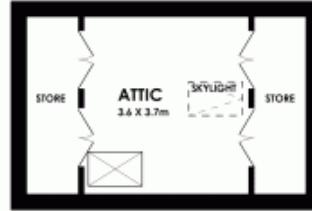
[For full version visit the website](#)



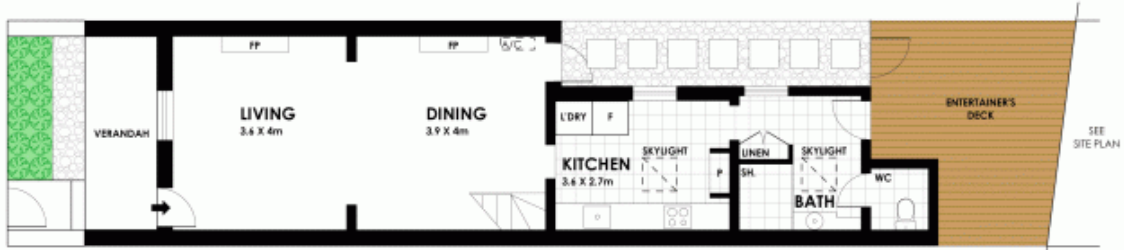
SITE PLAN (NOT TO SCALE)



LEVEL ONE



LEVEL TWO



GROUND LEVEL



Scale in metres, indicative only. Dimensions are approximate.

91 Gowrie Street, Newtown

true =  
PROPERTY