



610/1 Larkin Street CAMPERDOWN NSW

2 2 1

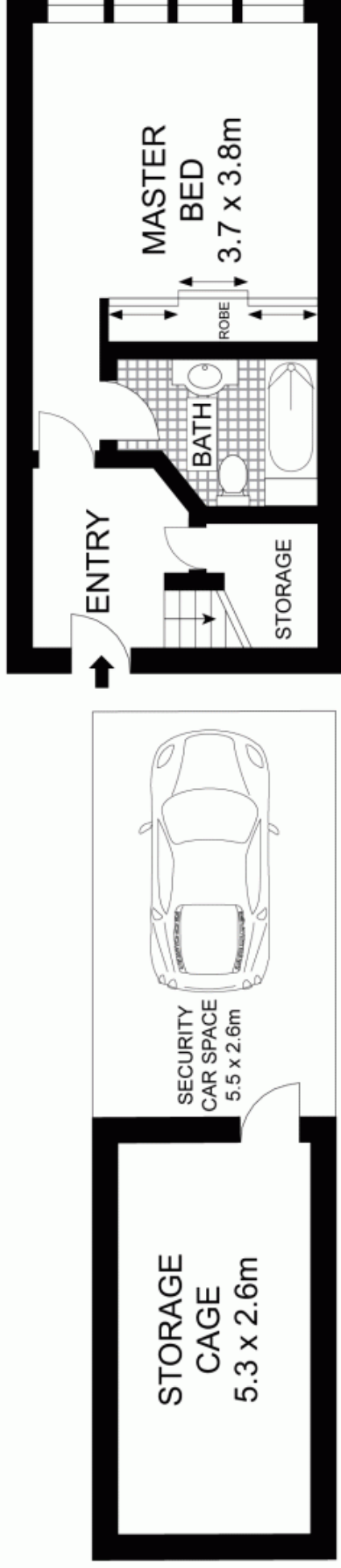
With a quiet cul-de-sac location this spacious lifestyle apartment puts you moments from Sydney city, Sydney University and Newtowns famous King Street. The dual level design boasts two king size bedrooms, the master with en-suite as well as open plan living and dining that flows to the covered balcony boasting views east over the city.

Type : Apartment

View : <https://www.trueproperty.com.au/sale/nsw/inner-west/camperdown/residential/apartment/7682397>

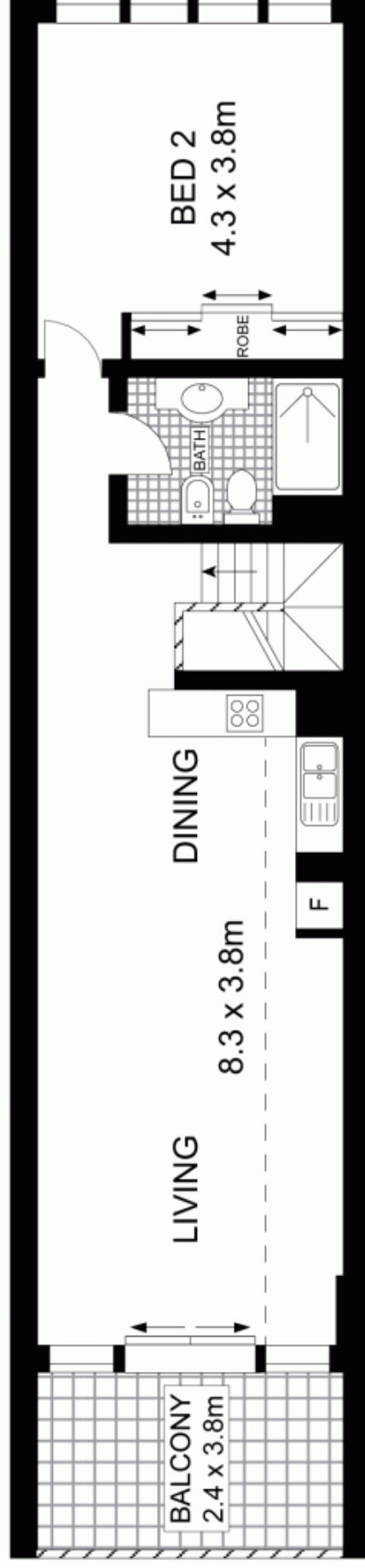
Spacious dual level floor plan
Master bed with robes & en-suite
Spacious second bed with robes
Open plan living and dining
Gas kitchen with stone bench tops
Security building with intercom
Secure undercover parking

[For full version visit the website](https://www.trueproperty.com.au)



BASEMENT

LEVEL SIX



Scale in metres. Indicative only. Dimensions are approximate. All information contained herein is gathered from sources we believe to be reliable. However, we cannot guarantee its accuracy and interested persons should rely on their own enquiries.



true PROPERTY

610/1 Larkin Street, Camperdown