



213/1 Larkin Street CAMPERDOWN NSW

2 2 1

****Under offer****

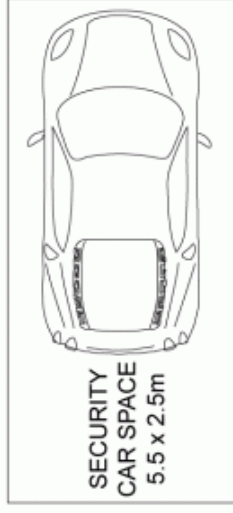
With a quiet cul-de-sac location this spacious lifestyle apartment puts you moments from Sydney city, Sydney University and Newtowns famous King Street. The dual level design boasts two king size bedrooms, the master with en-suite as well as open plan living and dining that flows to the covered balcony.

Spacious dual level floor plan
Master bed with robes & en-suite
Spacious second bed with robes
Open plan living and dining
Generous study area
Gas kitchen with stone bench tops

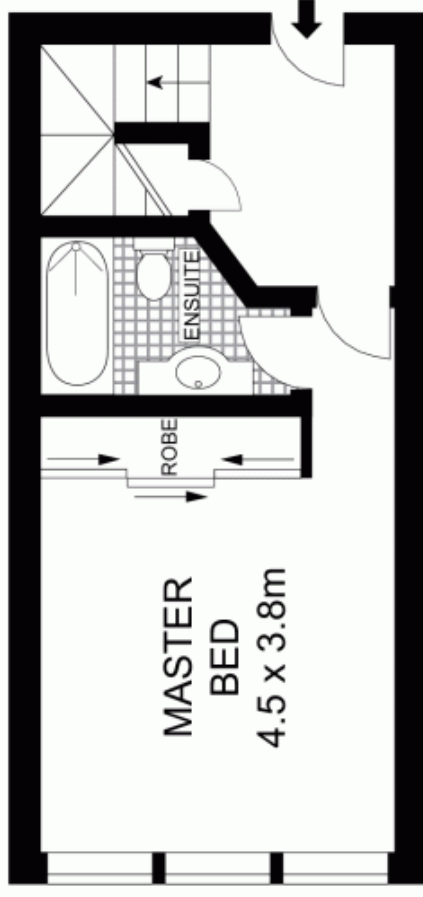
Type : Apartment

View : <https://www.trueproperty.com.au/sale/nsw/inner-west/camperdown/residential/apartment/7682395>

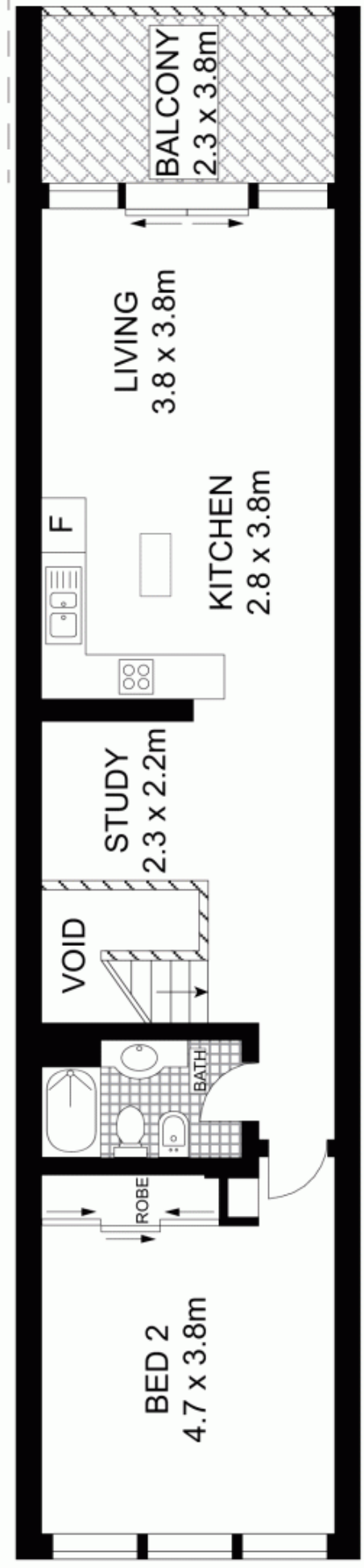
[For full version visit the website](https://www.trueproperty.com.au)



ENTRY LEVEL



GROUND FLOOR



FIRST LEVEL



Scale in metres. Indicative only. Dimensions are approximate. All information contained herein is gathered from sources we believe to be reliable. However, we cannot guarantee its accuracy and interested persons should rely on their own enquiries.



true
PROPERTY

213/1 Larkin Street, Camperdown