



23/143-145 Parramatta Road CONCORD NSW

2 1 1

Boasting an ideal and central address, this spacious and practice floorplan is designed for easy living. Offering easy access to Strathfield train station and many other facilities to make every day living easy this definitely one not to be missed.

- = Two bedrooms, main with built-in wardrobe
- = One tiled bathroom
- = Registered security car space
- = Open plan living and dining leading out to a sundrenched balcony
- = Large kitchen with granite benches and stainless steel appliances
- = Split system air conditioning
- = Security building with lift access

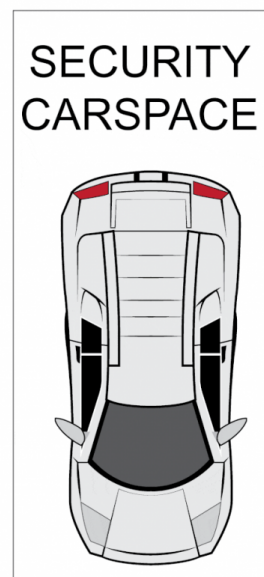
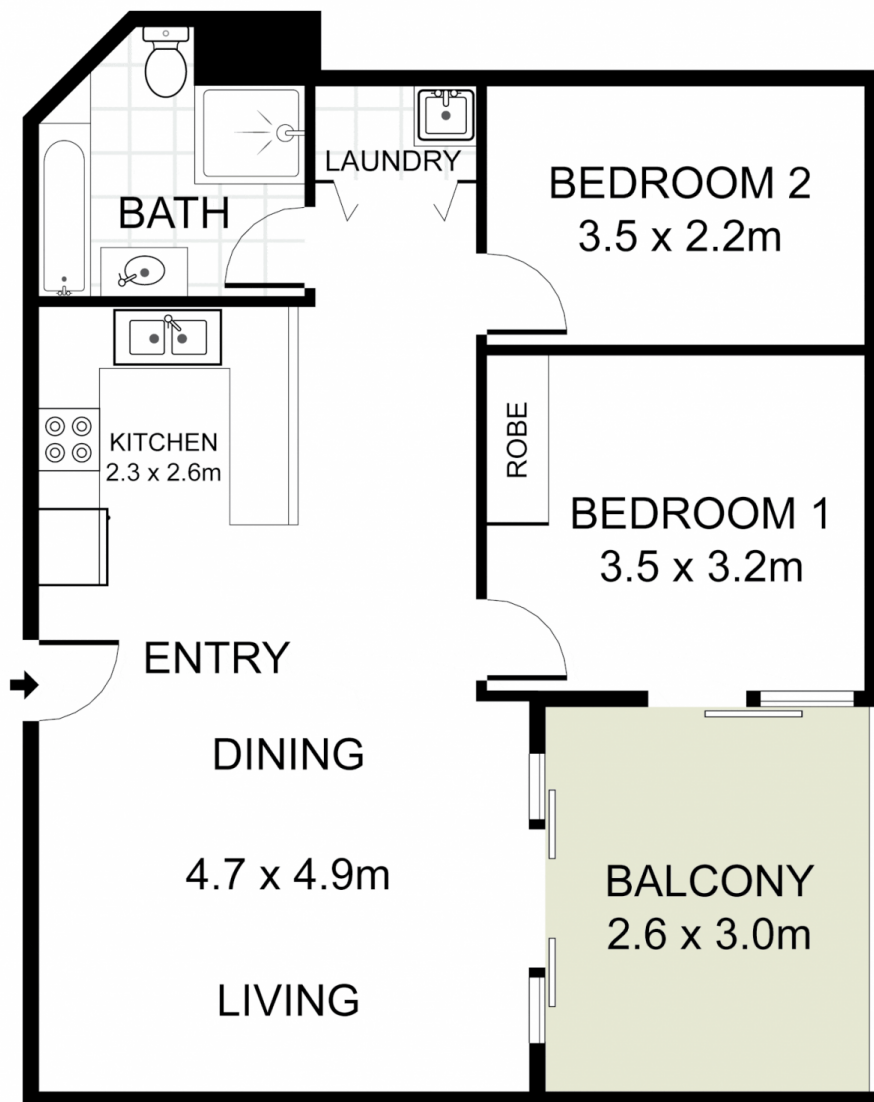
Type : Apartment

View : <https://www.trueproperty.com.au/sale/nsw/inner-west/concord/residential/apartment/7682365>



Michael Catalano
02 8507 2444

[For full version visit the website](#)



true =
PROPERTY

23/143 Parramatta Road, Concord

INT: 68 m²
EXT: 25 m²

DISCLAIMER: PLANS SHOWN ARE FOR PRESENTATION PURPOSES AND ARE NOT PART OF ANY LEGAL DOCUMENT. ALL MEASUREMENTS AND FIGURES ARE APPROXIMATE.