



## 10/23 Ross Street FOREST LODGE NSW

1 1 1

Beautiful open plan apartment located in the Calibre building. Perfect first home or solid investment in a fantastic area. Just moments from Glebe's famous lifestyle offerings as well as Sydney University and Broadway Shopping Centre.

- = Double bedroom with mirrored built in wardrobes
- = Modern gas kitchen with stainless steel Smeg appliances and stone bench top
- = Polished timber floors
- = Internal laundry
- = Large entertainers balcony off living area
- = Air conditioning and halogen down lighting
- = Security intercom and level lift access
- = Walk to Sydney University, shops and transport as well

**Type** : Apartment

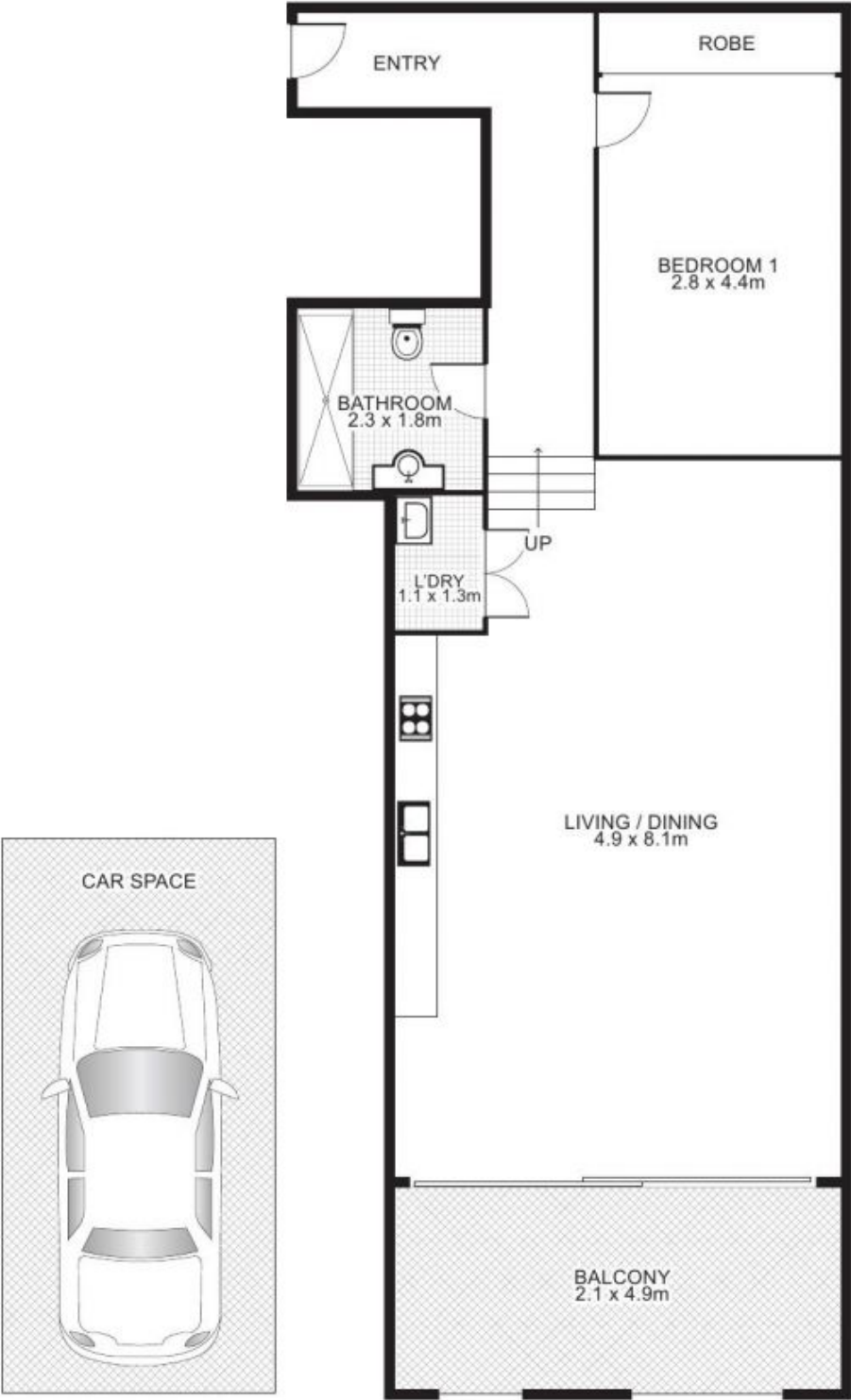
**View** : <https://www.trueproperty.com.au/sale/nsw/inner-west/forest-lodge/residential/apartment/7682361>



**Michael Catalano**  
02 8507 2444

[For full version visit the website](https://www.trueproperty.com.au)

10/23 Ross Street,  
GLEBE



Plans by  
**surroundpix**  
room.au  
1300 30 32 40

This floor plan is intended as a guide only. Layout dimension are approximate only. No representation or warranties of any nature whatsoever are given or intended. Any person using this information should rely on their own enquiries.