



## 412/1 Larkin Street CAMPERDOWN NSW

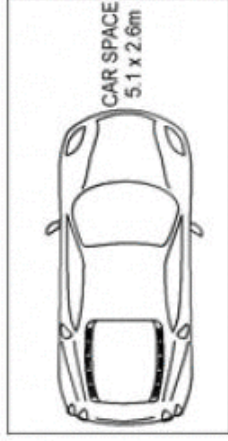
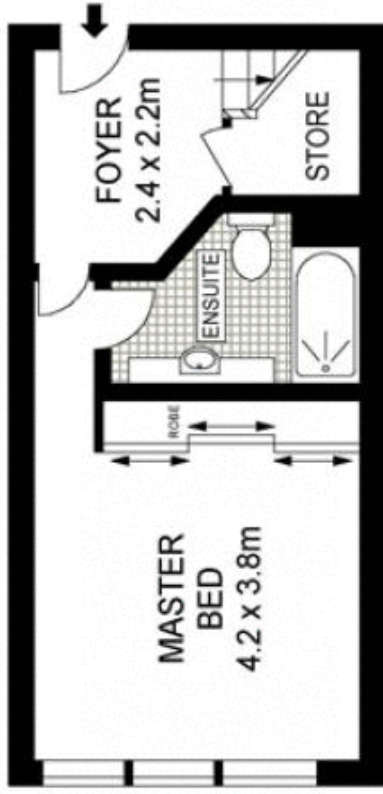
2 2 1

Located at the end of a quiet cul-de-sac, 'La Maison on Larkin' offers a fabulous lifestyle just moments to the city of Sydney.

The spacious two level design boasts a master bedroom with en suite and storage on the entry level, then upstairs the second king sized bedroom, main bathroom, study, open plan kitchen & living area flows to a sundrenched balcony with city skyline & district views.

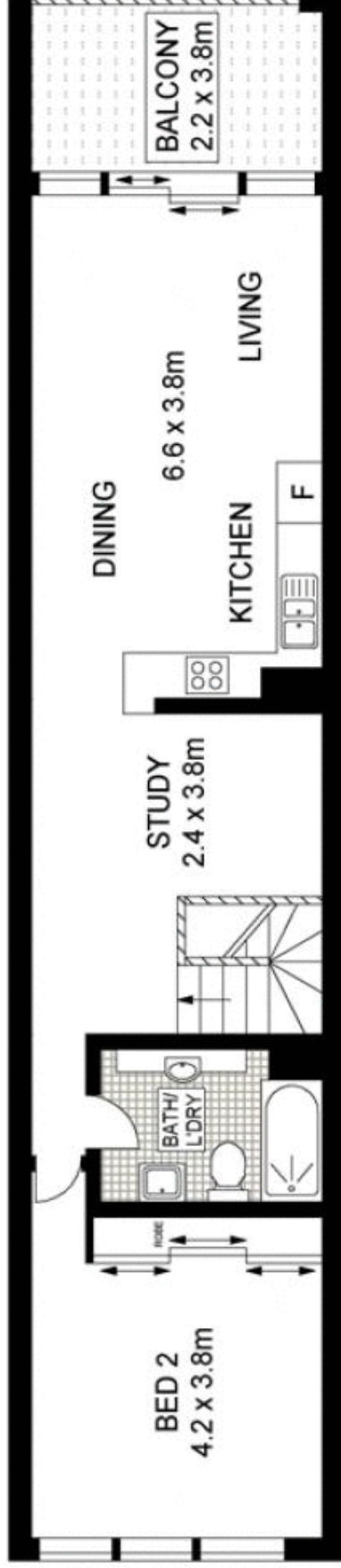
**Land Size** : 138 sqm  
**View** : <https://www.trueproperty.com.au/sale/nsw/inner-west/camperdown/residential/apartment/7682358>

- Two level spacious floorplan
- Two king sized bedrooms with built in wardrobes and district views
- Generous study area
- Open plan living and dining area
- Gas kitchen with stone bench tops
- Security building with intercom
- Secured undercover parking space & storage cage



**LEVEL FOUR**

**BASEMENT**



Scale in metres. Indicative only. Dimensions are approximate. All information contained herein is gathered from sources we believe to be reliable. However we cannot guarantee its accuracy and interested persons should rely on their own enquiries.

