



Unit 17/1 Checkley Court ERMINGTON NSW

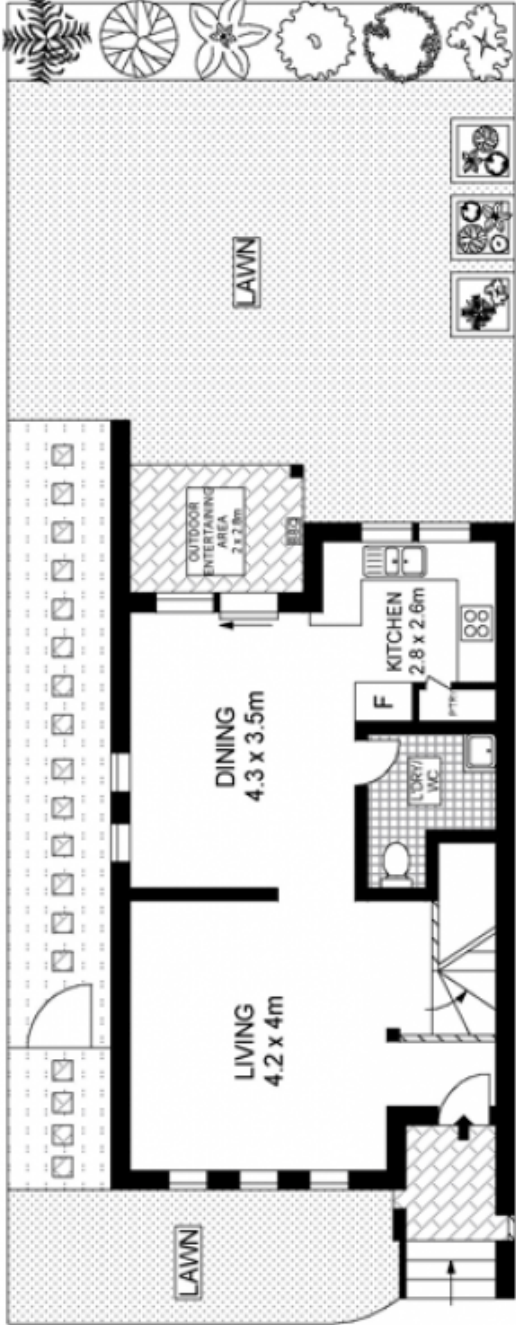
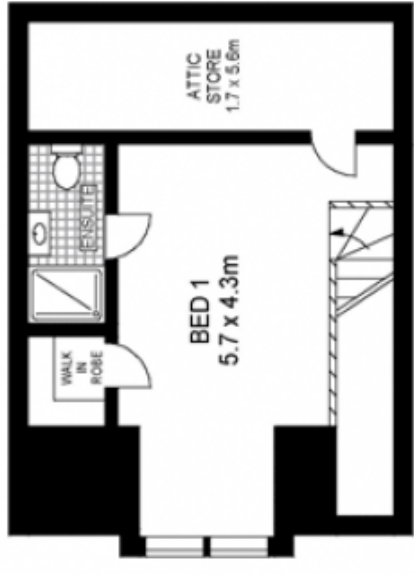
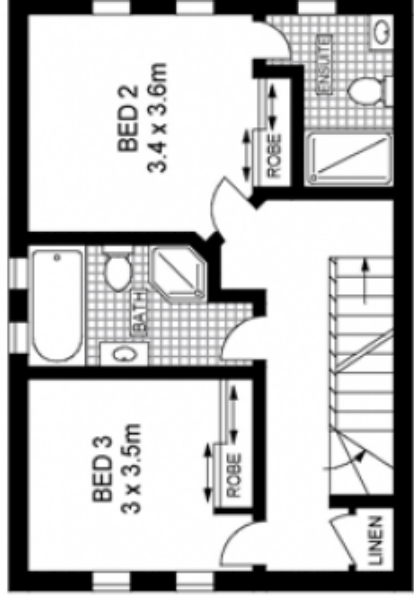
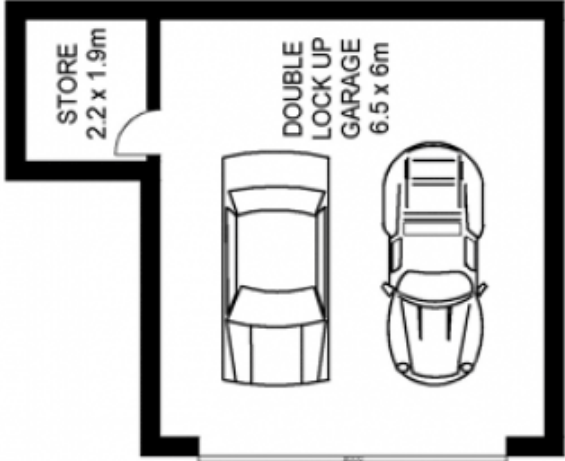
3  3  2 

This sparkling huge townhouse is in the perfect private location at the end of a cul-de-sac with no passing foot or car traffic, so safe for the kids and the pets. It features three large bedrooms, two with en-suites, all with built-in wardrobes. The ground level is all about lifestyle with polished wooden floors in the lounge, flowing through to the open plan living area serviced by a modern gas kitchen with beautiful granite bench tops. Out the back is a tiled BBQ area with mains gas and a private sunny level lawn surrounded by mature hedges and veggie gardens.

- Large internal laundry with guest toilet on ground floor
- Modern gas kitchen with lots of storage
- Secluded top floor main bedroom with en-suite and built ins.

Type : Townhouse
Price : \$ 570,000
Land Size : 132 sqm
View : <https://www.trueproperty.com.au/sale/nsw/parramatta/ermington/residential/townhouse/7682331>

[For full version visit the website](#)



Scale in metres. Indicative only. Dimensions are approximate. All information contained herein is gathered from sources we believe to be reliable. However we cannot guarantee its accuracy and interested persons should rely on their own enquiries.



17/1 Checkley Court, Ermington