



Unit 1/115-121 Wigram Road FOREST LODGE NSW

1 1 1

Located in the Centennial Apartments, designed by architect Jackson Teece, this spacious one bedroom is just moments from cosmopolitan Glebe's famous cafes, shopping and markets as well as Annandale village, prestigious Sydney University and waterfront Jubilee park.

Type : Apartment

Price : \$ 473,000

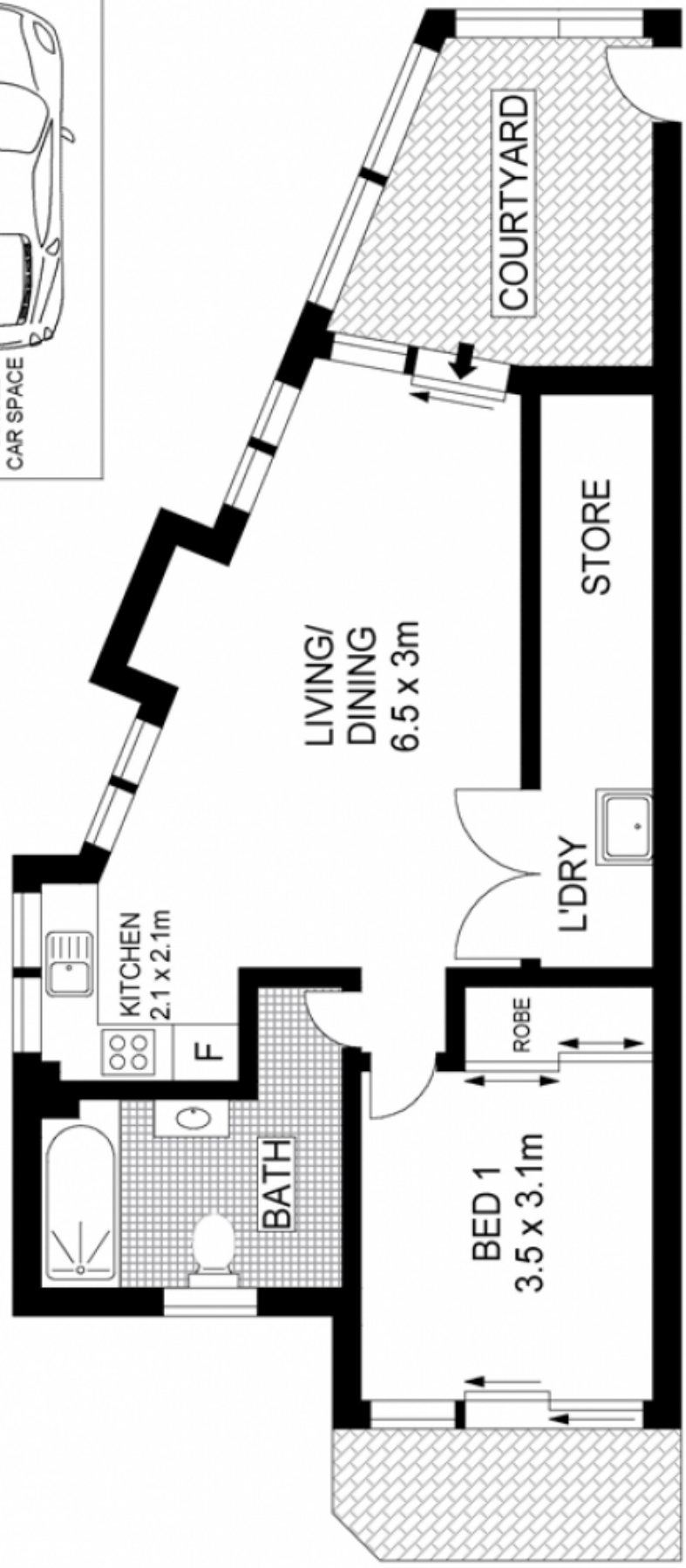
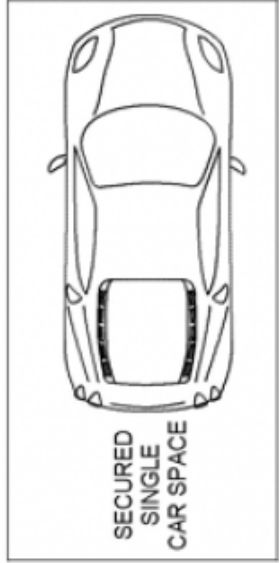
View : <https://www.trueproperty.com.au/sale/nsw/inner-west/forest-lodge/residential/apartment/7682330>

This north facing apartment is perfect for entertainer's with two private courtyards and a granite gas kitchen. The bamboo flooring, plantation shutters and air conditioning complete the open plan living and dining spaces.

The large bedroom features built in wardrobes as well as brand new carpet.

There's an over sized bathroom, internal laundry with plenty of storage space as well as a security intercom and

[For full version visit the website](#)



GROUND FLOOR



Scale in metres. Indicative only. Dimensions are approximate. All information contained herein is gathered from sources we believe to be reliable. However we cannot guarantee its accuracy and interested persons should rely on their own enquiries.



1/115 Wigram Road, Forest Lodge