

Unit 7501/177 Mitchell Road ERSKINEVILLE NSW

2  2  1 

Enjoy resort style living with this spacious two bedroom apartment moments from all the area's lifestyle amenities. Walk to St Peters train station, Newtown's famous King Street shopping and restaurants as well as Erskineville Village.

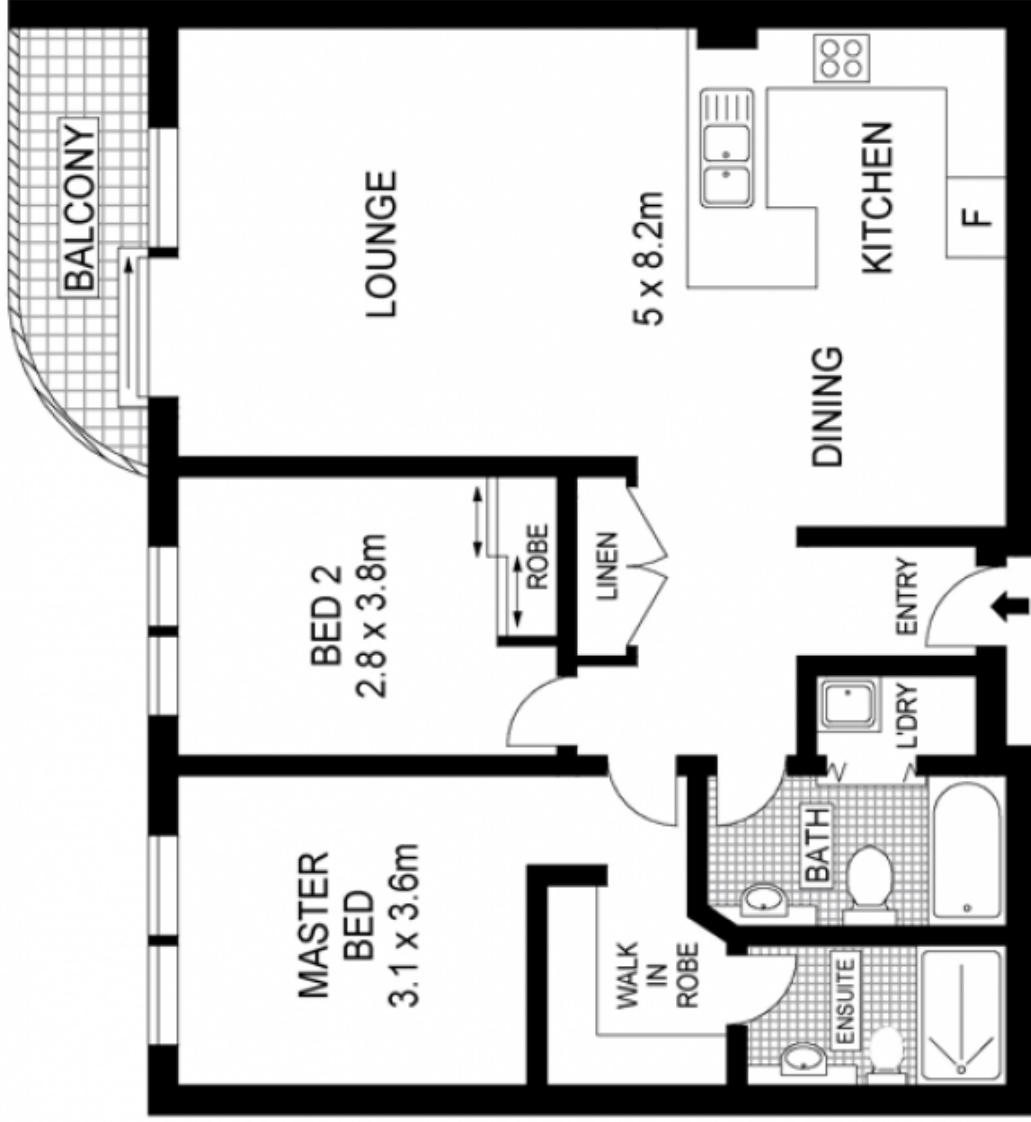
Type : Apartment

Price : \$ 523,000

View : <https://www.trueproperty.com.au/sale/nsw/inner-west/erskineville/residential/apartment/7682310>

- Master bedroom features walk in wardrobe and ensuite
- Large second bedroom with built in wardrobes
- Open plan living and dining spaces
- Large gas kitchen with plenty of bench space
- Second full bathroom and separate internal laundry
- Balcony flows from the living area, perfect for entertaining
- Security parking, security intercom, lift access
- Great rental return in a fabulous suburb
- Complex features indoor and outdoor pools, spa, sauna,

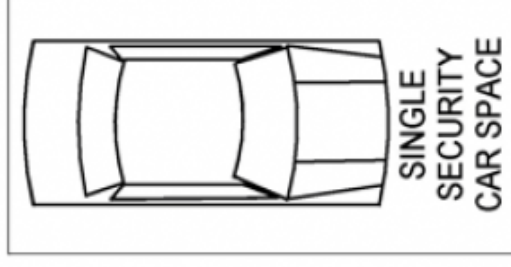
[For full version visit the website](#)



LEVEL FIVE



Scale in metres. Indicative only. Dimensions are approximate. All information contained herein is gathered from sources we believe to be reliable. However we cannot guarantee its accuracy and interested persons should rely on their own enquiries.



BASEMENT

7501/177 Mitchell Road, Erskineville