

230 Wilson Street NEWTOWN NSW

2 1

This dual level two bedroom terrace is positioned on the doorstep of everything Newtown and Erskineville have to offer. A fabulous home or investment in an always popular suburb.

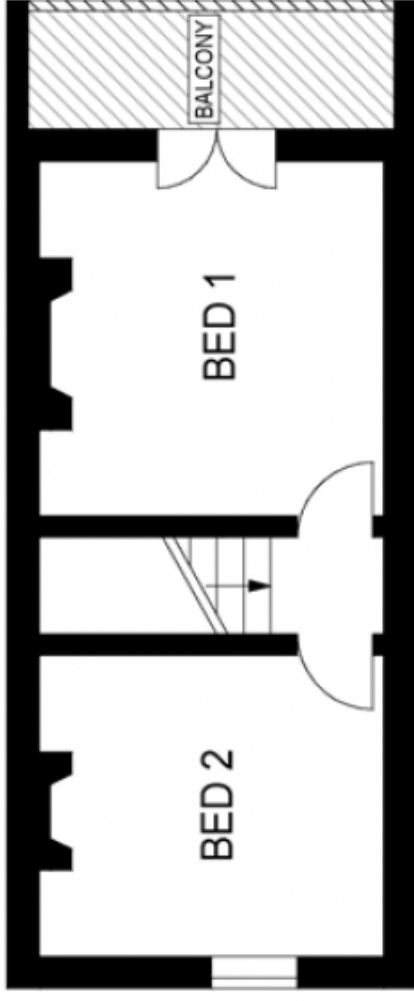
Type : House

Price : \$ 659,000

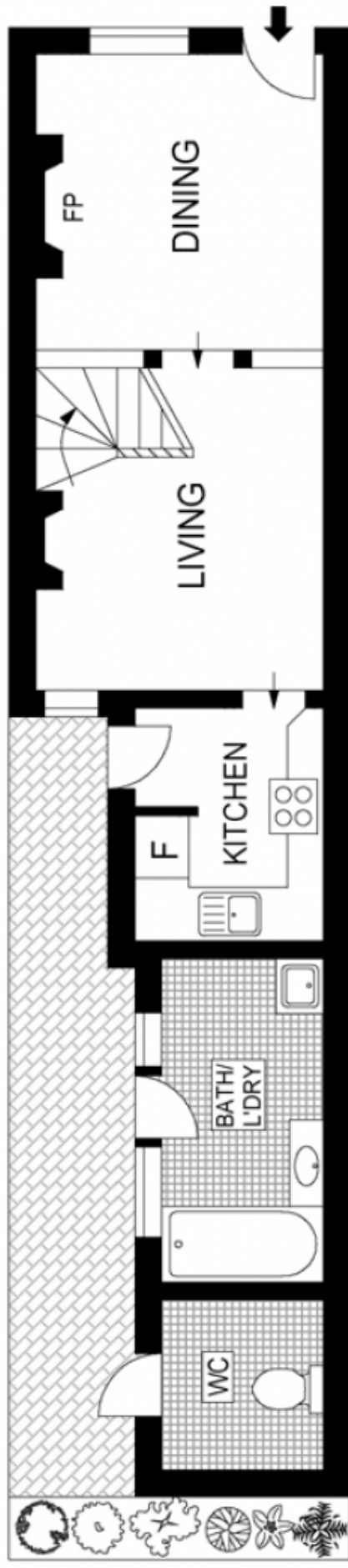
View : <https://www.trueproperty.com.au/sale/nsw/inner-west/newtown/residential/house/7682301>

- A character filled "Vauxhall Terrace"
- Beautiful polished timber floors and ornate fire place
- Open plan living and dining spaces
- First floor balcony off master bedroom
- North facing paved rear courtyard
- Solar panel installed providing electricity for the household
- Ready to live in with potential to further enhance
- Fabulous transport links within walking distance of MacDonaltdown and Erskineville train stations

[For full version visit the website](https://www.trueproperty.com.au)



FIRST FLOOR



GROUND FLOOR



Scale in metres. Indicative only. Dimensions are approximate.

