



## Unit 101/34 Wentworth Street GLEBE NSW

1

Conveniently located on the doorstep to the CBD this well maintained owner occupied studio apartment is a fabulous investment opportunity or city pad

Neat electric kitchen with plenty of cupboard space and a good sized bathroom

Sunlit east facing balcony with leafy outlook, built in wardrobe storage

Moments to Glebe's cafes, restaurants, pubs and Saturday markets

Walk to Sydney Fish Markets, the harbour foreshore, Sydney Uni and UTS

Convenient light rail and bus transport, great access to Chinatown and the CBD

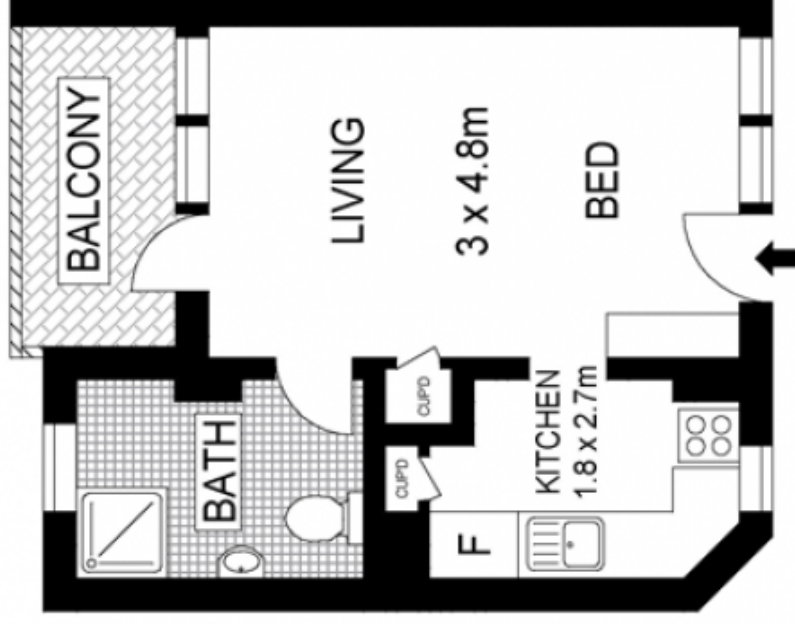
Surrounded by parks and moments to Broadway Shopping

**Type** : Studio

**Price** : \$ 208,000

**View** : <https://www.trueproperty.com.au/sale/nsw/inner-west/glebe/residential/studio/7682300>

[For full version visit the website](https://www.trueproperty.com.au)



## ELEVATED GROUND FLOOR



Scale in metres. Indicative only. Dimensions are approximate. All information contained herein is gathered from sources we believe to be reliable. However we cannot guarantee its accuracy and interested persons should rely on their own enquiries.



**true** =  
PROPERTY

101/34 Wentworth Street, Glebe