

## Unit 3/32 Rosehill Street REDFERN NSW

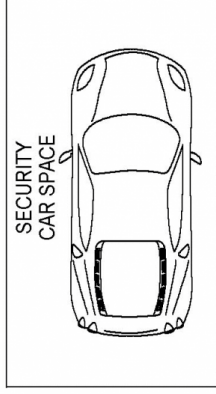
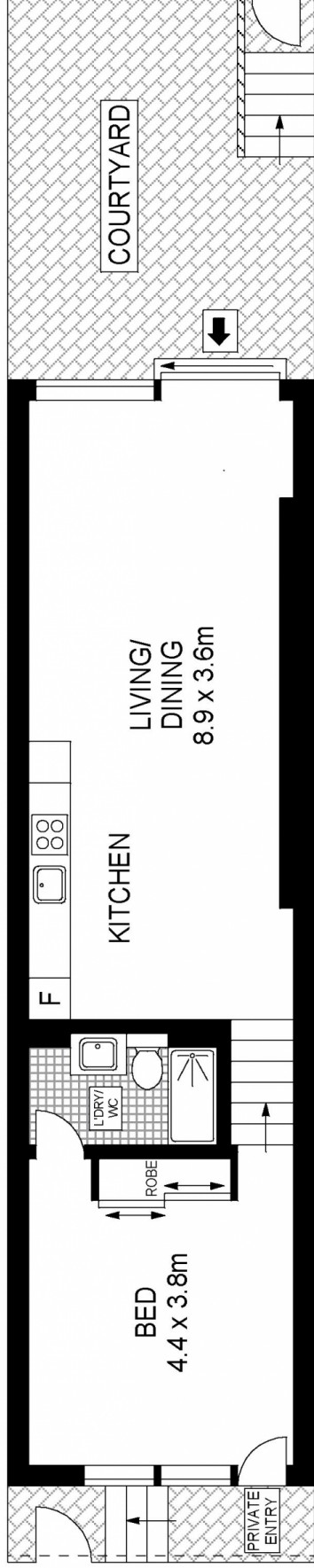
1  1  1 

This one bedroom split level apartment puts you in the heart of cosmopolitan Redfern within walking distance of Erskineville village and Newtown's famous King Street. Boasting all the modern features this apartment makes the perfect home or investment.

- Open plan living and dining open to the sunny north facing courtyard
- Entertainers gas kitchen with Smeg appliances, stone bench tops and glass splash backs
- Large double bedroom with built in wardrobes
- Separate private entrance

[For full version visit the website](#)

**Type** : Apartment  
**Building Size** : 11 sqm  
**View** : <https://www.trueproperty.com.au/sale/nsw/eastern-suburbs/redfern/residential/apartment/7682298>



**GROUND FLOOR**



Scale in metres. Indicative only. Dimensions are approximate.

