



13/11 Bud Greenspan Circuit LIDCOMBE NSW

4 2 1

Triumphantly set in the exclusive and prestigious locale of Lidcombe, this home boasts spacious interiors and quality finishes throughout. With its perfect layout, this unique four bedroom designer home oozes natural light and provides the highest level of comfort and convenience.

Light-filled dining area seamlessly flowing through a ultra-modern gas kitchen with stainless steel appliances, ample storage and bench space.

Fabulously appointed separate living room with timber floors and practical layout

Sundrenched and tranquil paved courtyard including pergola

Two immaculate modern tiled bathrooms
Internal laundry with W/C

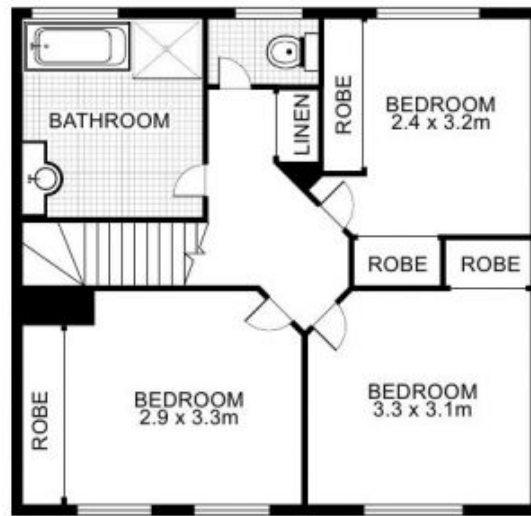
Type : Semi Detached
Land Size : 200 sqm
View : <https://www.trueproperty.com.au/sale/nsw/parramatta/lidcombe/residential/semi-detached/7682215>



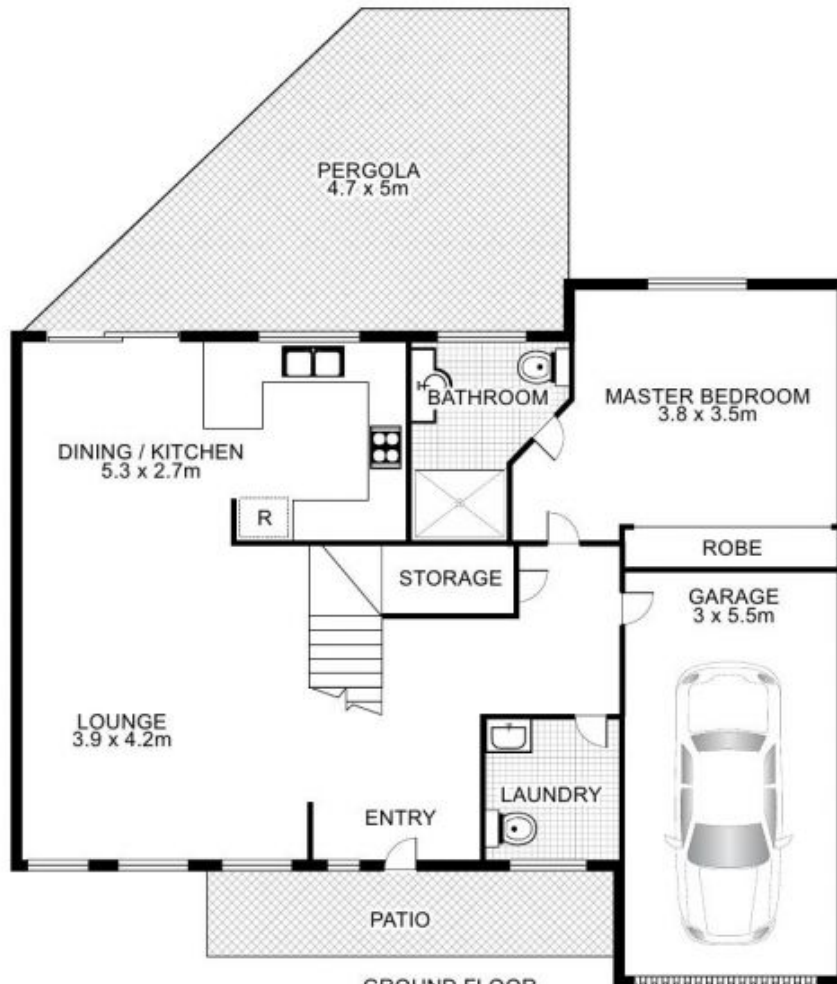
Michael Catalano
02 8507 2444

[For full version visit the website](https://www.trueproperty.com.au)

13/11 Bud Greenspan Circuit, LIDCOMBE



FIRST FLOOR



GROUND FLOOR

Total Area : 101.24m²



This floor plan is intended as a guide only. Layout dimension are approximate only. No representation or warranties of any nature whatsoever are given or intended. Any person using this information should rely on their own enquiries.