



## 12/23-25 Ross Street FOREST LODGE NSW

1 1 1

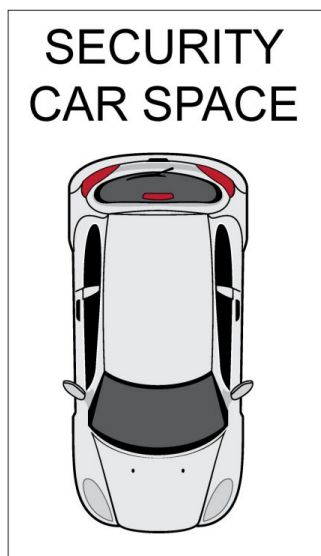
Nestled on the second floor of the exclusive "Calibre" boutique complex sits this oversized and immaculate one bedroom apartment. Located within walking distance to Royal Prince Alfred Hospital, Sydney University, waterfront park lands, Broadway Shopping Centre and cosmopolitan Glebe shopping precinct this apartment is a must to inspect.

- = King sized bedroom with built in wardrobe
- = Generous sized bathroom with level shower access
- = Massive light-filled air conditioned combined living and dining area
- = Gourmet gas kitchen with Smeg stainless steel appliances and dishwasher
- = Sundrenched balcony with district views and and internal laundry with dryer
- = Security carspace with lift access and located within a

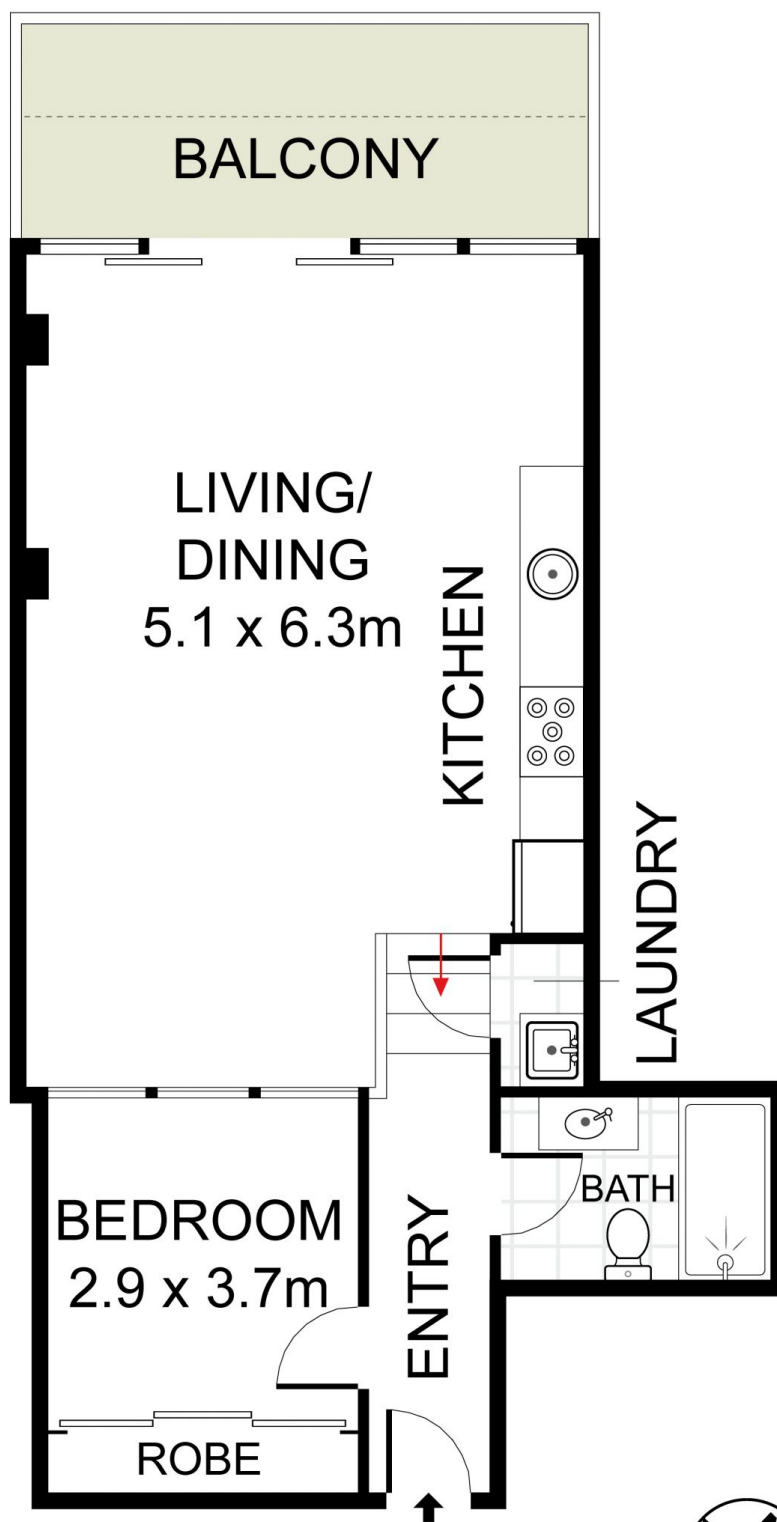
**View :** <https://www.trueproperty.com.au/sale/nsw/inner-west/forest-lodge/residential/apartment/7682213>



**Michael Catalano**  
02 8507 2444



LEVEL ONE



LEVEL FIVE



true =  
PROPERTY

12/23-25 Ross Street, Glebe

DISCLAIMER: PLANS SHOWN ARE FOR PRESENTATION PURPOSES AND ARE NOT PART OF ANY LEGAL DOCUMENT. ALL MEASUREMENTS AND FIGURES ARE APPROXIMATE.