



330 Rowe Street Eastwood NSW

5 2 2

"Berrilee" Located in one of Eastwood's most prized and convenient streets, this double brick home with an approx 25m frontage will hold immense appeal for large/extended families. It's an oasis of family living that showcases uncompromising standards of luxury, sympathetically blending classic federation architecture with contemporary elegance.

= This home is not Heritage or Heritage Conservation listed. It is zoned R2 and has the potential for multiple use STCA.

= Five generous bedrooms awash with astonishing period charm

= Two stylish bathrooms, main with bathtub

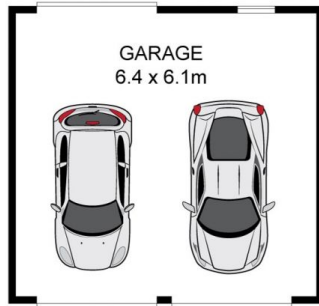
= Formal lounge featuring amazing timber joinery and

Type : House
Land Size : 1145 sqm
View : <https://www.trueproperty.com.au/sale/nsw/northern-suburbs/eastwood/residential/house/7682147>

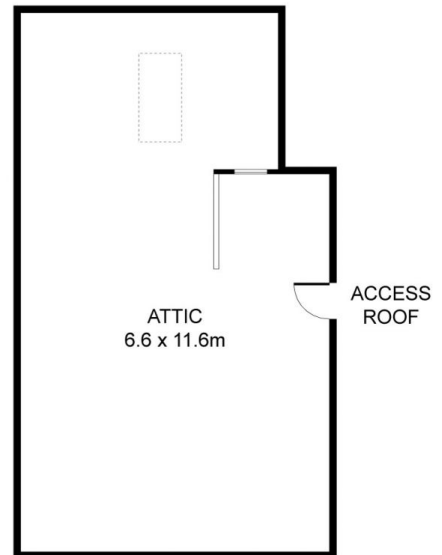


Michael Catalano
02 8507 2444

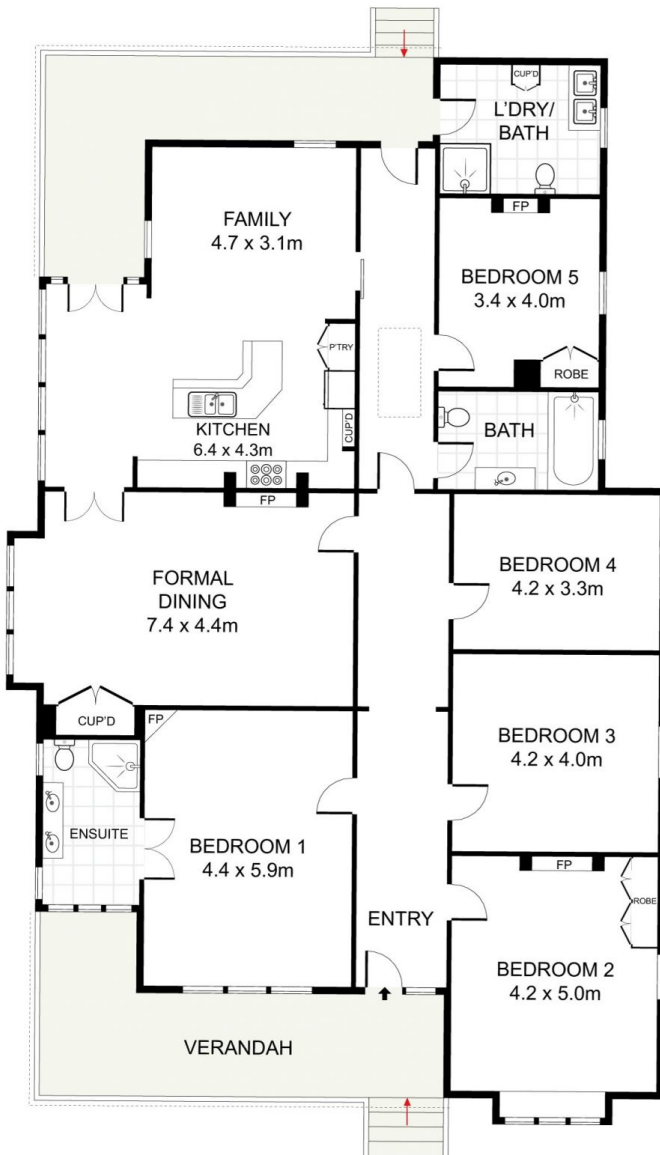
[For full version visit the website](https://www.trueproperty.com.au)



LAND SIZE: 1145 m²



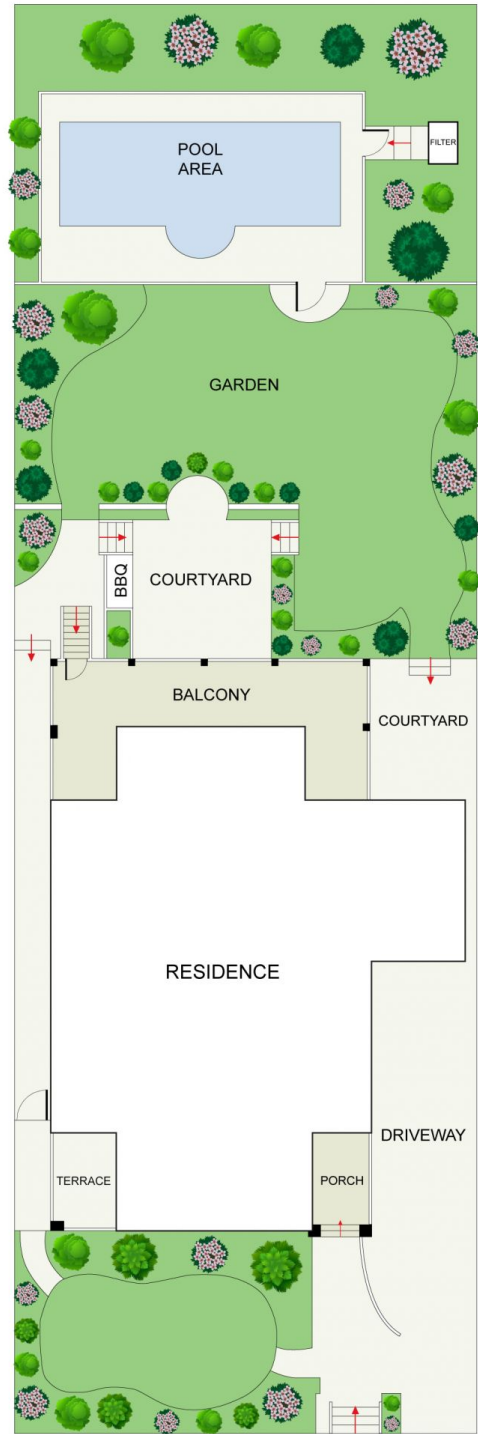
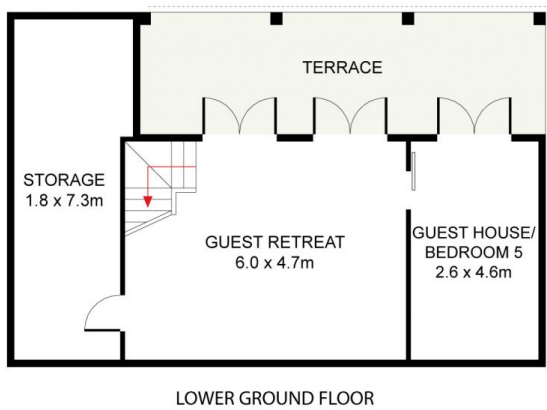
ATTIC



GROUND FLOOR



SITE PLAN (NOT TO SCALE)



true =
PROPERTY

17 Clive Road, Eastwood

DISCLAIMER: PLANS SHOWN ARE FOR PRESENTATION PURPOSES AND ARE NOT PART OF ANY LEGAL DOCUMENT. ALL MEASUREMENTS AND FIGURES ARE APPROXIMATE.