



## 181 Parramatta Road ANNANDALE NSW

Located in the heart of Annandale's village and with fantastic street frontage this large open plan commercial space is ideal for any business.

### THE PROPERTY

- = Floor area approx 250sqm
- = Recently updated throughout with bathroom facilities
- = Two lock up garages

### THE FEATURES

- = Great exposure to passing traffic
- = Split level offering a practical layout
- = Sunlit and spacious throughout

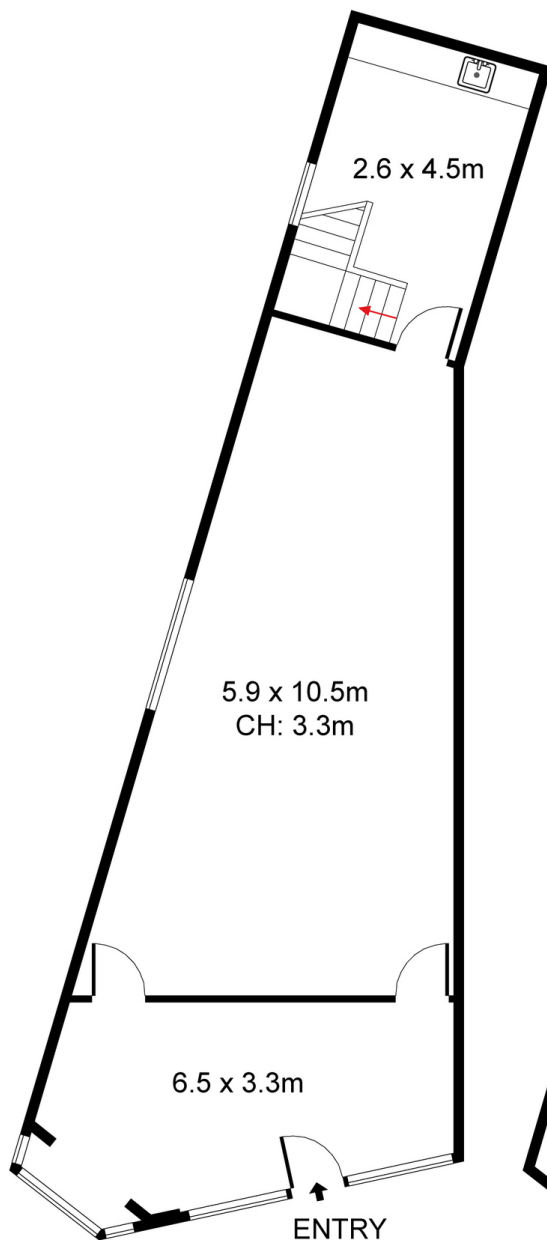
### THE AREA

[For full version visit the website](https://www.trueproperty.com.au/lease/nsw/inner-west/annandale/commercial/retail/7182491)

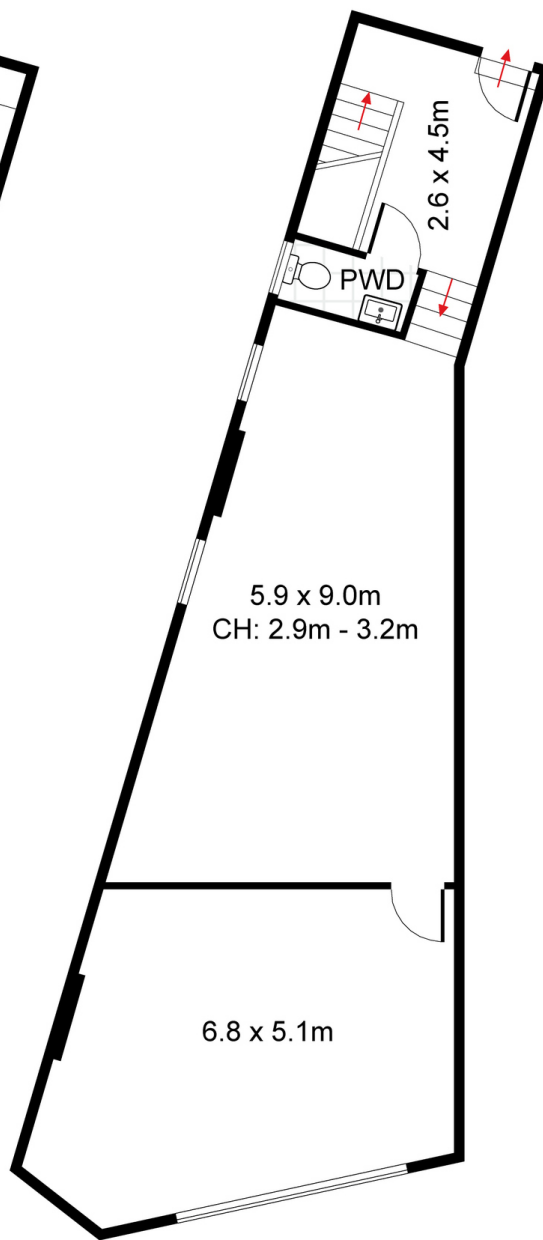
**Type** : Retail  
**Building Size** : 250 sqm  
**Land Size** : 250 sqm  
**View** : <https://www.trueproperty.com.au/lease/nsw/inner-west/annandale/commercial/retail/7182491>



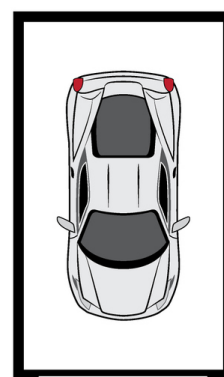
**Michael Catalano**  
**02 8507 2444**



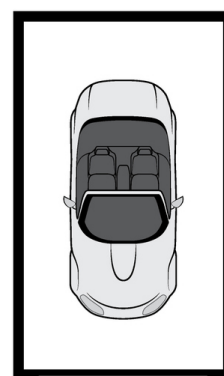
GROUND LEVEL



LEVEL ONE



GARAGE



GARAGE



true =  
PROPERTY

181 Parramatta Road, Annandale

DISCLAIMER: PLANS SHOWN ARE FOR PRESENTATION PURPOSES AND ARE NOT PART OF ANY LEGAL DOCUMENT. ALL MEASUREMENTS AND FIGURES ARE APPROXIMATE.